

Majestic Architecture

Be awed by a truly magnificent sight as you take in splendid views of green canopies formed by the sky terraces and multi-layered greeneries in this development. This visual splendour is raised further by the towers' distinctive facade, which create a modern profile and commanding presence.



5 exquisite 43-storey residential towers...
758 units of studio apartments
3-, 4- and 5-Room Premium flats...

Artist's Impression

View of SkyTerrace @ Dawson from Alexandra Canal Linear Park

By night, it becomes a shining beacon that warmly welcomes you home.



Evening view of SkyTerrace @ Dawson

Artist's Impression

Rooted in Heritage and Greenery

Be greeted by cascading terrace gardens at SkyTerrace @ Dawson. These garden retreats, together with other green communal spaces, serve as convenient gathering areas for the residents.



You will also enjoy the unique Heritage Gallery where you can stroll through passages decorated with displays celebrating Dawson's rich history.



Feel on Top of the World

click on image to view enlarge version

SkyTerrace @ Dawson

Feel on top of the world
as you enjoy splendid views

Linked by landscaped sky terraces which are open to the public, the 8 towers of SkyTerrace @ Dawson offer stunning views of the surrounding cityscape.

Relax and unwind
amid lush green surrounds

At SkyTerrace @ Dawson, landscaped courts and green vistas surround a central lawn with a delightful array of recreational facilities, such as:

- Fitness stations for elderly
- Children's playground
- Badminton courts
- Tai-chi court
- Multi-purpose court
- Outdoor amphitheatre

Embrace green living
with eco-friendly design

SkyTerrace @ Dawson embraces nature and green technologies for greener and cleaner living.

North-South Orientation & Lush Greenery

- provide a cooler environment for all.

Recycled rainwater

- for irrigating landscaped areas

Solar-power

- for lighting common areas

On-site bio-swales

- to facilitate the natural cleaning of surface water

Artist's Impression

Landscaped terrace gardens

Landscaped terrace gardens

Multi-generation Living



Artist's Impression

A unique feature of SkyTerrace @ Dawson is the availability of loft units with a double volume space at the living/dining area. These loft units can be sold individually or paired with a Studio Apartment. Extended families can apply jointly for a 4-room or 5-room loft unit paired with a Studio Apartment under the pilot Multi-Generation Living Scheme. A set of interconnecting doors will be provided when sold as a paired unit.

4-ROOM (LOFT 1) UPPER FLOOR PLAN



STUDIO APARTMENT FLOOR PLAN
APPROX. FLOOR AREA 44 sqm
(Inclusive of Internal Floor Area 42 sqm
and Air-Con Ledge)



4-ROOM (LOFT 1) LOWER FLOOR PLAN
APPROX. FLOOR AREA 109 sqm
(Inclusive of Internal Floor Area 88 sqm,
Air-Con Ledge and Double Volume Space)

5-ROOM (LOFT 1) UPPER FLOOR PLAN



STUDIO APARTMENT FLOOR PLAN
APPROX. FLOOR AREA 44 sqm
(Inclusive of Internal Floor Area 42 sqm
and Air-Con Ledge)



5-ROOM (LOFT 1) LOWER FLOOR PLAN
APPROX. FLOOR AREA 122 sqm
(Inclusive of Internal Floor Area 103 sqm,
Air-Con Ledge and Double Volume Space)

Ample Choices



Artist's Impression

SkyTerrace @ Dawson features numerous flat types that make it easy to choose the home that best suits your living needs.



STUDIO APT FLOOR PLAN
 APPROX. FLOOR AREA 37 sqm
 (Inclusive of Internal Floor Area 35 sqm
 and Air-Con Ledge)



STUDIO APT FLOOR PLAN
 APPROX. FLOOR AREA 44 sqm
 (Inclusive of Internal Floor Area 42 sqm
 and Air-Con Ledge)



3-ROOM FLOOR PLAN
 APPROX. FLOOR AREA 65 sqm
 (Inclusive of Internal Floor Area 63 sqm and Air-Con Ledge)

Ample Choices



4-ROOM FLOOR PLAN
 APPROX. FLOOR AREA 83 sqm
 (Inclusive of Internal Floor Area 81 sqm and Air-Con Ledge)



4-ROOM (LOFT 2) FLOOR PLAN
 APPROX. FLOOR AREA 97 sqm
 (Inclusive of Internal Floor Area 83 sqm, Air-Con Ledge and Double Volume Space)



5-ROOM FLOOR PLAN
 APPROX. FLOOR AREA 99 sqm
 (Inclusive of Internal Floor Area 98 sqm and Air-Con Ledge)

General Specifications (Studio Apartment)

Foundation

Piled foundations.

Structure

Reinforced concrete structural framework with reinforced concrete slabs.

Roof

Reinforced concrete roof slab with precast concrete secondary roofing.

Walls

All external and internal walls are constructed with reinforced concrete / solid blocks / bricks with cement plastering / precast panels / precast lightweight concrete partitions.

Windows

Aluminium framed windows with tinted glass.

Doors

Entrance : decorative solid timber door and metal gate
 Bedrooms : decorative solid timber door (Type D12)
 Bathroom/WC : pvc folding door
 Household Shelter : metal door
 Inter-connecting Door : decorative solid timber door
 (where applicable)

Finishes

Ceilings : skim coated or plastered and painted
 Bathroom/WC/Kitchen walls : glazed ceramic tiles
 Other walls : skim coated or plastered and painted
 Living/Dining floor : glazed porcelain ceramic tiles with timber skirting
 Kitchen floor : glazed porcelain ceramic tiles
 Bedroom floor : timber strips flooring with timber skirting
 Bathroom/WC floor : glazed ceramic tiles
 Household Shelter floor : glazed porcelain ceramic tiles

Fittings

Quality locksets.
 Quality sanitary fittings.
 Kitchen cabinets with cooker hood, gas hob & kitchen sink.
 Built in wardrobe.
 Clothes drying rack.

Services

Gas services and concealed water supply pipes.
 Concealed electrical wiring to lighting and power points (including water heater and air conditioning points).
 Television points.
 Telephone points.

Apt Type	Electrical Accessories / Other Appliances										
	13A Switch Socket Outlets	TV Outlet	Tel Outlet	Lighting Point c/w Light Fittings	Lighting Switch	Gas Water Heater	20A DP Heater Switch	20A Heater Point	Bell Point (including switch)	AC Isolator	Alert Alarm Pull Cord
Studio Apt (35 sqm)	13	3	3	7	11	1	1	1	1	1	4
Studio Apt (42 sqm)	15	3	3	7	11	1	1	1	1	1	4

Important Notes:

- The Household Shelter is designed for use as civil defence shelter. The walls, ceiling, floor and door of the Household Shelter shall not be hacked, drilled, altered or removed.
 Air-con panel in the main bedroom will not be provided.
 You are advised to visit HDB's website at www.hdb.gov.sg for information on renovation rules.
- The common areas and spaces fronting or surrounding the flats are not available for purchase, and HDB will not accede to any requests from purchasers to purchase and enclose the common areas.

The plans and information in this brochure are the copyright of the Housing & Development Board (HDB), Singapore. The HDB reserves the right at any time without notice and at its sole discretion to change any aspect of this project including but not limited to the omission, amalgamation of or increasing or reducing the communal facilities and amenities. All art renderings, illustrations, pictures, photographs and other graphic representations and references are artist's impressions only. Similarly, all dimensions, areas, plans, colour schemes, descriptions and specifications noted herein are subject to change or alteration without notice if required by the Competent Authority or at HDB's sole & absolute discretion. The HDB will not entertain any request for alteration of the layout or specifications of a flat, to meet individual needs. The void deck in any apartment block may subsequently be used for facilities, such as child care centres, education centres, resident's committee centres and such other facilities as HDB shall deem fit.

The Floor Areas are scaled Strata Areas.

General Specifications (3-, 4- & 5-Room)

Foundation

Piled foundations.

Structure

Reinforced concrete structural framework with reinforced concrete slabs.

Roof

Reinforced concrete roof slab with precast concrete secondary roofing .

Walls

All external and internal walls are constructed with reinforced concrete / solid blocks / bricks with cement plastering / precast panels / precast lightweight concrete partitions.

Windows

Aluminium framed windows with tinted glass.

Doors

Entrance : decorative solid timber door and metal gate
 Bedrooms : decorative solid timber door (Type D12) (optional)
 Attached Bathroom/ WC : sliding laminated semi-solid timber door
 Other Bathrooms / WC : laminated semi-solid timber door (Type D12a) (optional)
 Household Shelter : metal door
 Service Yard : aluminium framed door with glass
 Balcony / Living (where applicable) : aluminium framed door with glass
 Inter-connecting door (where applicable) : decorative solid timber door

Finishes

Ceilings : skim coated or plastered and painted
 Bathroom/WC/Kitchen walls : glazed ceramic tiles
 Other walls : skim coated or plastered and painted
 Living/Dining floor : glazed porcelain ceramic tiles with timber skirting
 Bedroom floor : timber strips flooring with timber skirting
 Kitchen floor : glazed porcelain ceramic tiles
 Bathroom/WC floor : glazed ceramic tiles
 Service Yard floor : glazed porcelain ceramic tiles with tiles skirting
 Household Shelter floor : glazed porcelain ceramic tiles
 Balcony Floor (where applicable) : structured homogeneous tiles with tiles skirting
 Internal Staircase Floor (where applicable) : timber strips flooring with timber skirting

Fittings

Quality locksets.
 Quality sanitary fittings.
 Vanity top wash basin for attached Bathroom/WC, wash basin for other Bathroom/WC.
 Clothes drying rack.

Services

Gas services and concealed water supply pipes.
 Concealed electrical wiring to lighting and power points (including water heater and air conditioning points).
 Television points.
 Telephone points.

Apt Type	Electrical Accessories								
	13A Switch Socket Outlets	TV Outlet	Tel Outlet	Lighting Point	Lighting Switch	20A DP Heater Switch	20A Heater Point	Bell Point (including switch)	AC Isolator
3-Room	22	4	4	11	11	2	2	1	1
4-Room	27	5	5	14	14	2	2	1	1
4-Room Loft 1	27	5	5	17	17	2	2	1	1
4-Room Loft 2	27	5	5	15	15	2	2	1	1
5-Room	29	5	5	15	16	2	2	1	1
5-Room Loft 1	29	5	5	17	17	2	2	1	1

Enclosure

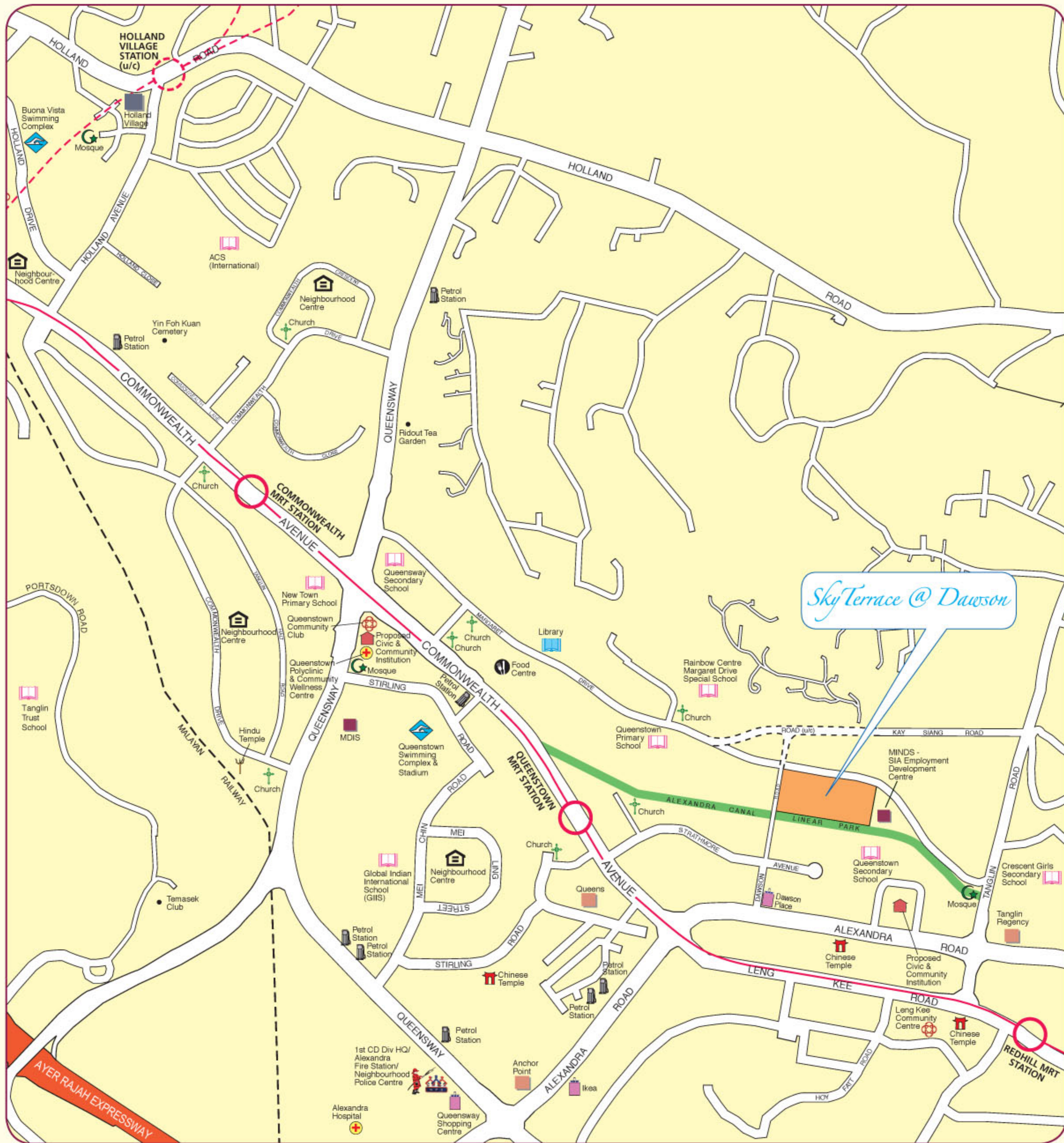
Full-height louvers windows with glass parapet for bedroom at upper level for Loft Apartment only.

Important Notes:

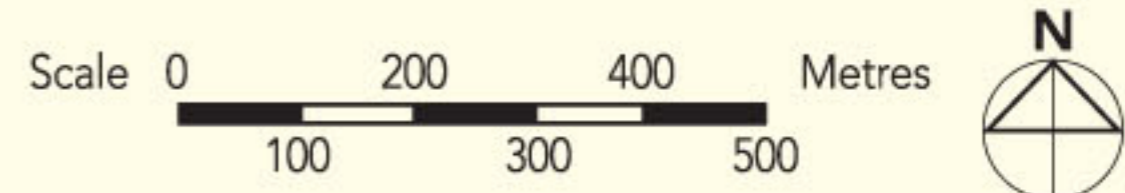
- The Household Shelter is designed for use as civil defence shelter. The walls, ceiling, floor and door of the Household Shelter shall not be hacked, drilled, altered or removed.
 Air-con panel in the main bedroom will not be provided.
 You are advised to visit HDB's website at www.hdb.gov.sg for information on renovation rules.
- The common areas and spaces fronting or surrounding the flats are not available for purchase, and HDB will not accede to any requests from purchasers to purchase and enclose the common areas.

The plans and information in this brochure are the copyright of the Housing & Development Board (HDB), Singapore. The HDB reserves the right at any time without notice and at its sole discretion to change any aspect of this project including but not limited to the omission, amalgamation of or increasing or reducing the communal facilities and amenities. All art renderings, illustrations, pictures, photographs and other graphic representations and references are artist's impressions only. Similarly, all dimensions, areas, plans, colour schemes, descriptions and specifications noted herein are subject to change or alteration without notice if required by the Competent Authority or at HDB's sole & absolute discretion. The HDB will not entertain any request for alteration of the layout or specifications of a flat, to meet individual needs. The void deck in any apartment block may subsequently be used for facilities, such as child care centres, education centres, resident's committee centres and such other facilities as HDB shall deem fit.

The Floor Areas are scaled Strata Areas.



SkyTerrace @ Dawson



- LEGEND:**
- MRT Line & Station
 - - -○- - - MRT Line & Station (u/c)
 - (u/c) Under Construction
 - Future Road

Notes:
 All proposed developments are subject to change and planning approval.
 Proposed Civic & Community Institution includes examples like Association, Home for the Aged, etc., subject to change and planning approval.

The information contained herein is subject to change at any time without notice and cannot form part of an offer or contract. The proposed facilities and their locations as shown are only estimates. The proposed facilities may include other ancillary uses allowed under URA's prevailing Development Control guidelines. For example, places of worship may also include columbarium as an ancillary use, while community centres may also include childcare centres. The implementation of the facilities is subject to review by the Government or competent authorities. While reasonable care has been taken in providing this information, HDB shall not be responsible in any way for any damage or loss suffered by any person whether directly or indirectly as a result of reliance on the said information or as a result of any error or omission therein.



SkyTerrace @ Dawson

Premium Flats



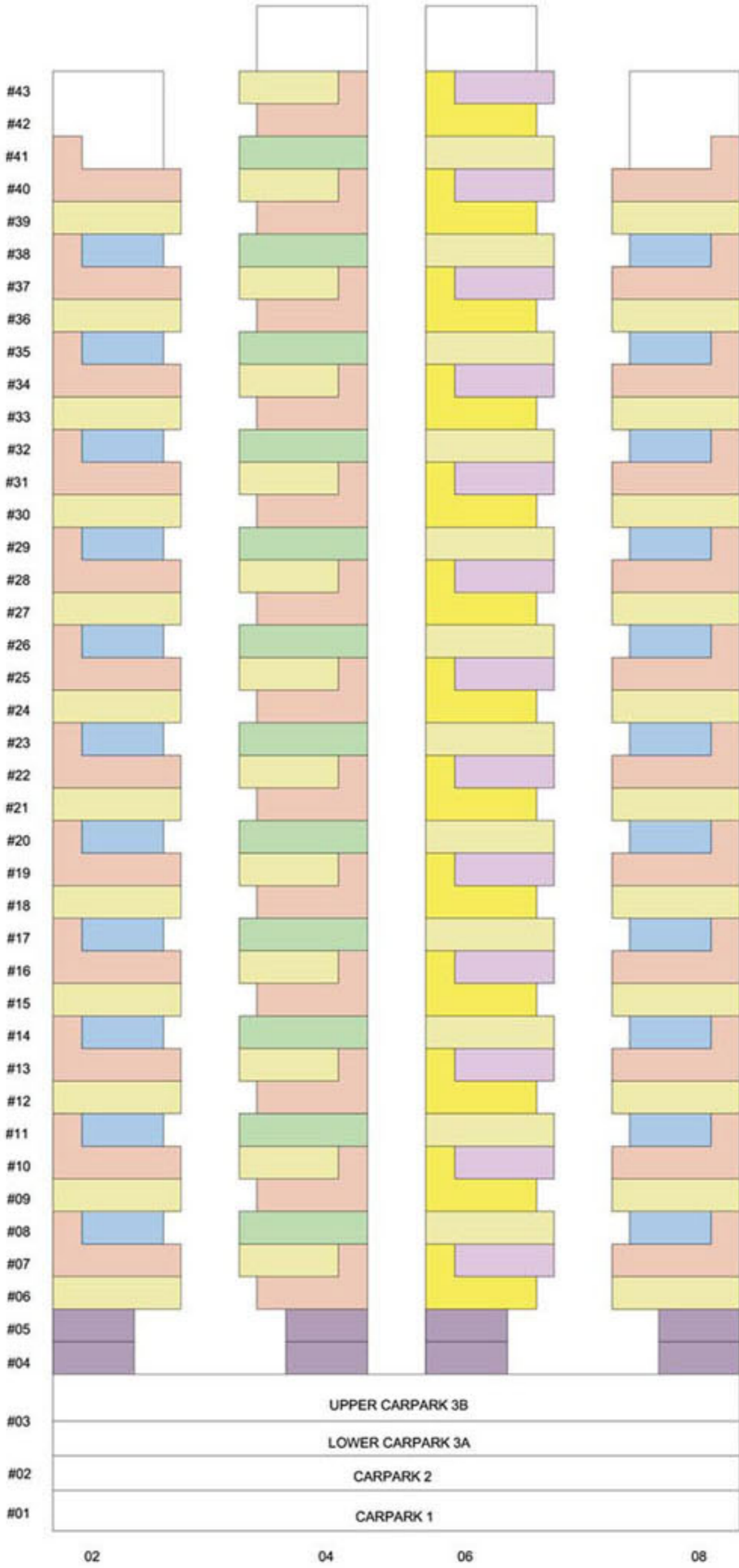
The information contained herein is subject to change at any time without notice and cannot form part of an offer or contract. The proposed facilities and their locations as shown are only estimates. The proposed facilities may include other ancillary uses allowed under URA's prevailing Development Control guidelines. For example, places of worship may also include columbarium as an ancillary use, while community centres may also include childcare centres. The implementation of the facilities is subject to review by the Government or competent authorities. While reasonable care has been taken in providing this information, HDB shall not be responsible in any way for any damage or loss suffered by any person whether directly or indirectly as a result of reliance on the said information or as a result of any error or omission therein.

LEGEND

- RESIDENTIAL FLATS
- OPEN SPACE WITH TREE PLANTING & TURFING
- SURROUNDING BUILDINGS
- LINKWAY / PERCINCT PAVILION / DROP-OFF PORCH / SHELTER
- CHILDREN PLAYGROUND
- ELECTRICAL SUB-STATION
- SKY GARDEN AT 13TH, 18TH, 19TH, 28TH, 33RD AND 34TH
- ROOF GARDEN & SKY TERRACES
- STAIRCASE
- SERVICE BAY
- LIFT
- REFUSE / RECYCLE CHUTE
- DEVELOPMENT BOUNDARY
- BLK 89A CARPARK

Block Number	Number of storeys	Studio Apartment	3 Room	4 Room	4 Room Loft 2	Paired Unit		Paired Unit			Lift opens at
						4 Room Loft 1	Studio Apartment	5 Room	5 Room Loft 1	Studio Apartment	
89	40/43	8	22	49	37	13	13	12	-	-	Every Storey
90	40/43	8	22	47	35	13	13	12	-	-	Every Storey
91	40/43	8	22	47	35	13	13	12	-	-	Every Storey
92	40/43	8	22	49	37	-	-	12	13	13	Every Storey
93	40/43	8	22	49	35	-	-	10	13	13	Every Storey
Total		40	110	241	179	39	39	58	26	26	

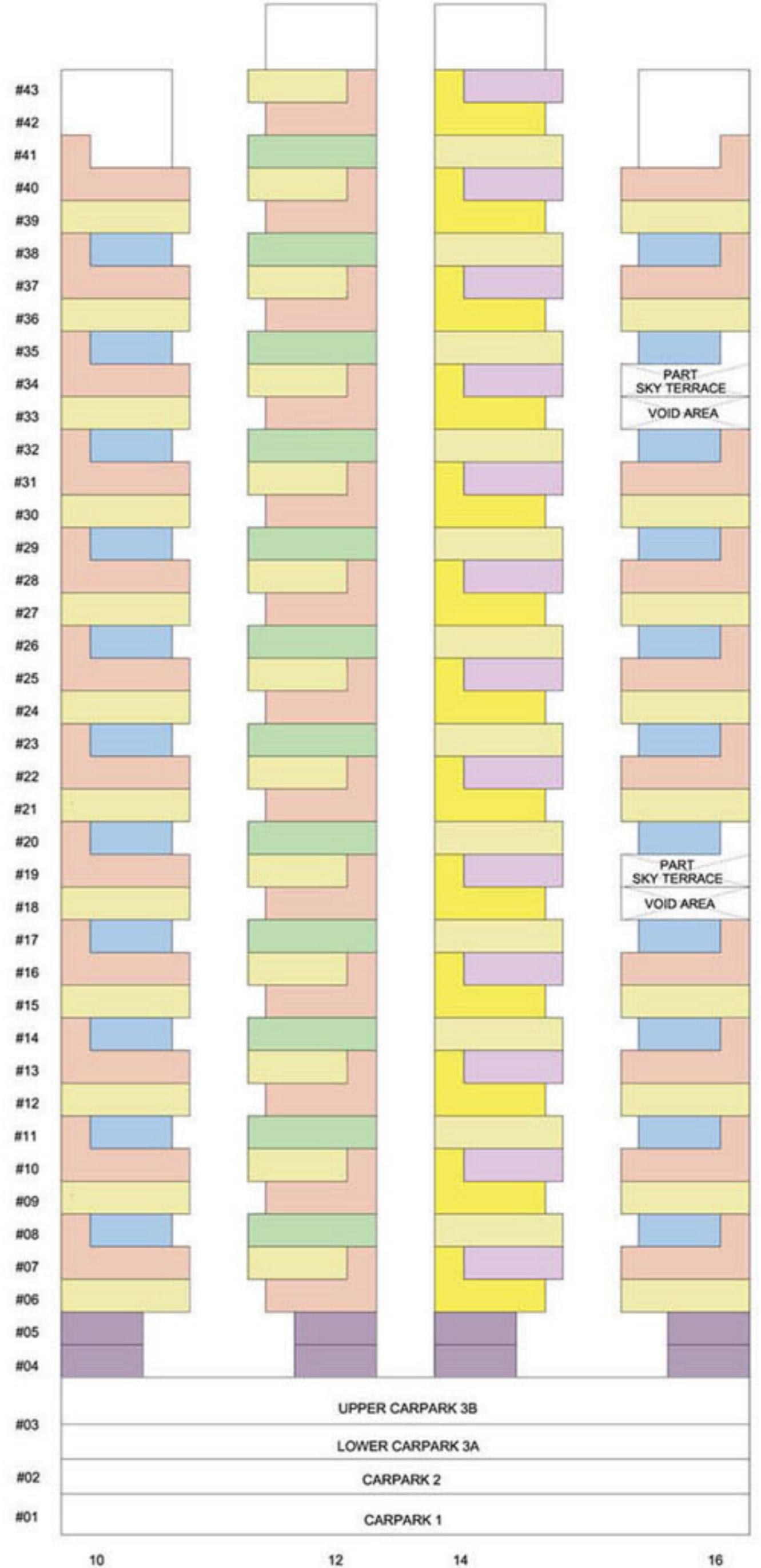
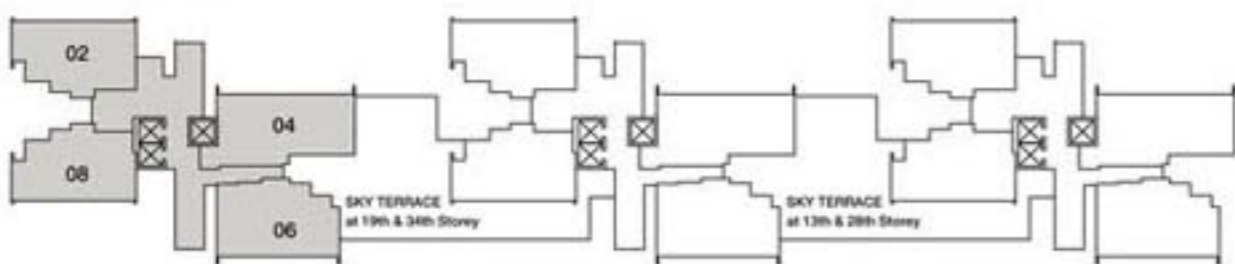
SkyTerrace @ Dawson



LEGEND:

- Studio (Paired)
- Studio
- 3 Room
- 4 Room
- 4 Room Loft 1
- 4 Room Loft 2
- 5 Room
- 5 Room Loft 1

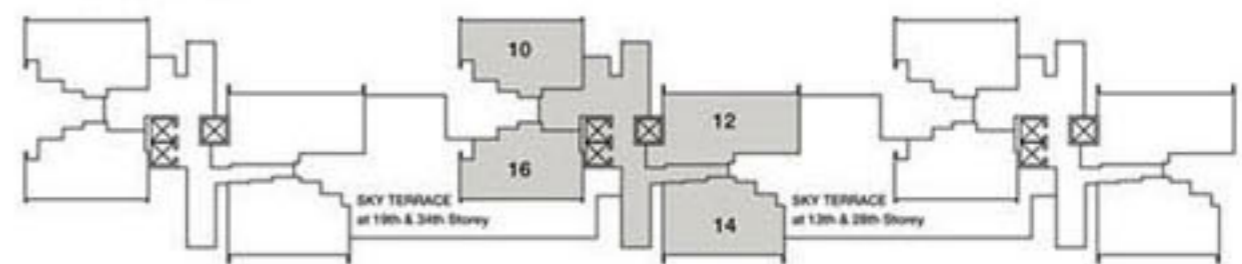
BLOCK 89



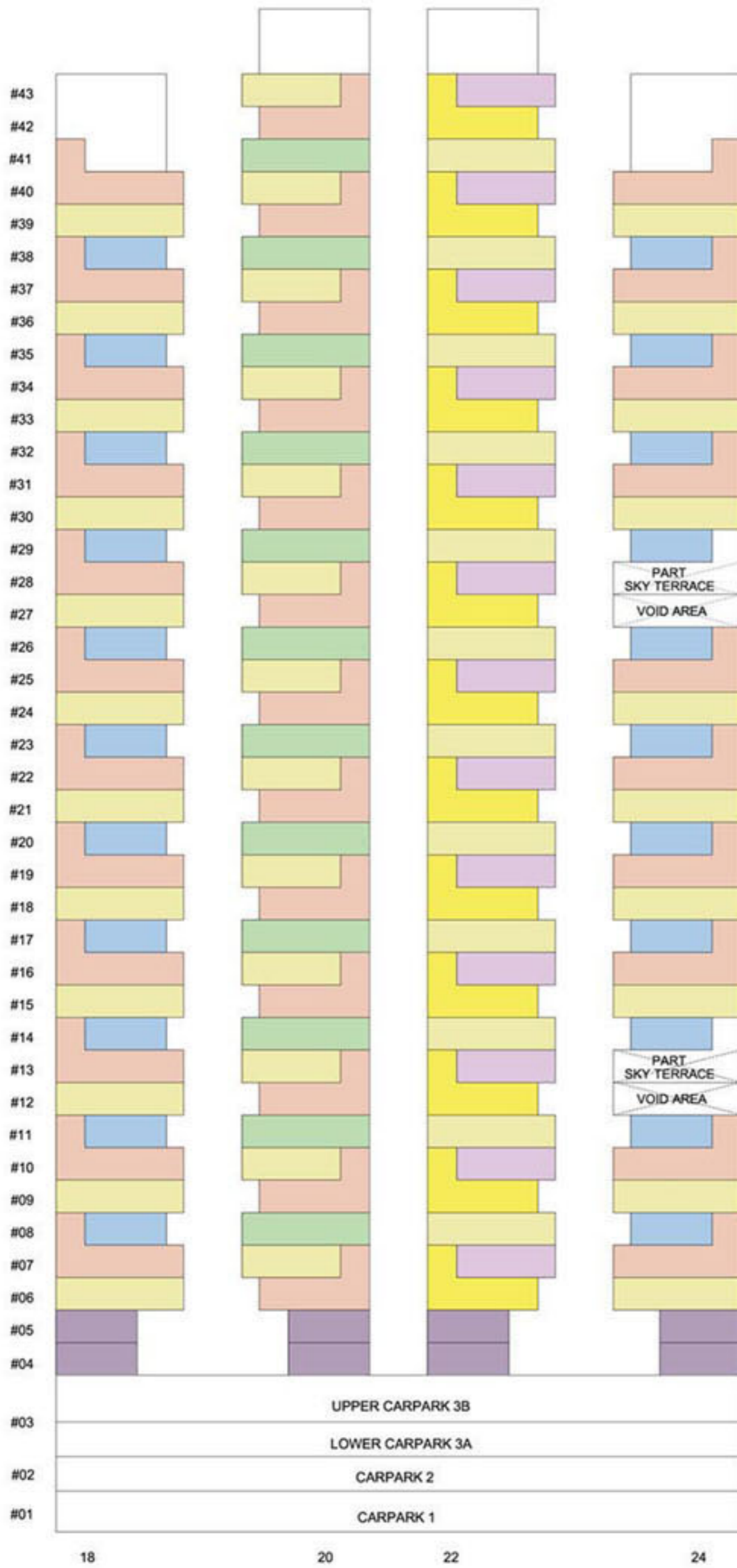
LEGEND:

- Studio (Paired)
- Studio
- 3 Room
- 4 Room
- 4 Room Loft 1
- 4 Room Loft 2
- 5 Room
- 5 Room Loft 1

BLOCK 90



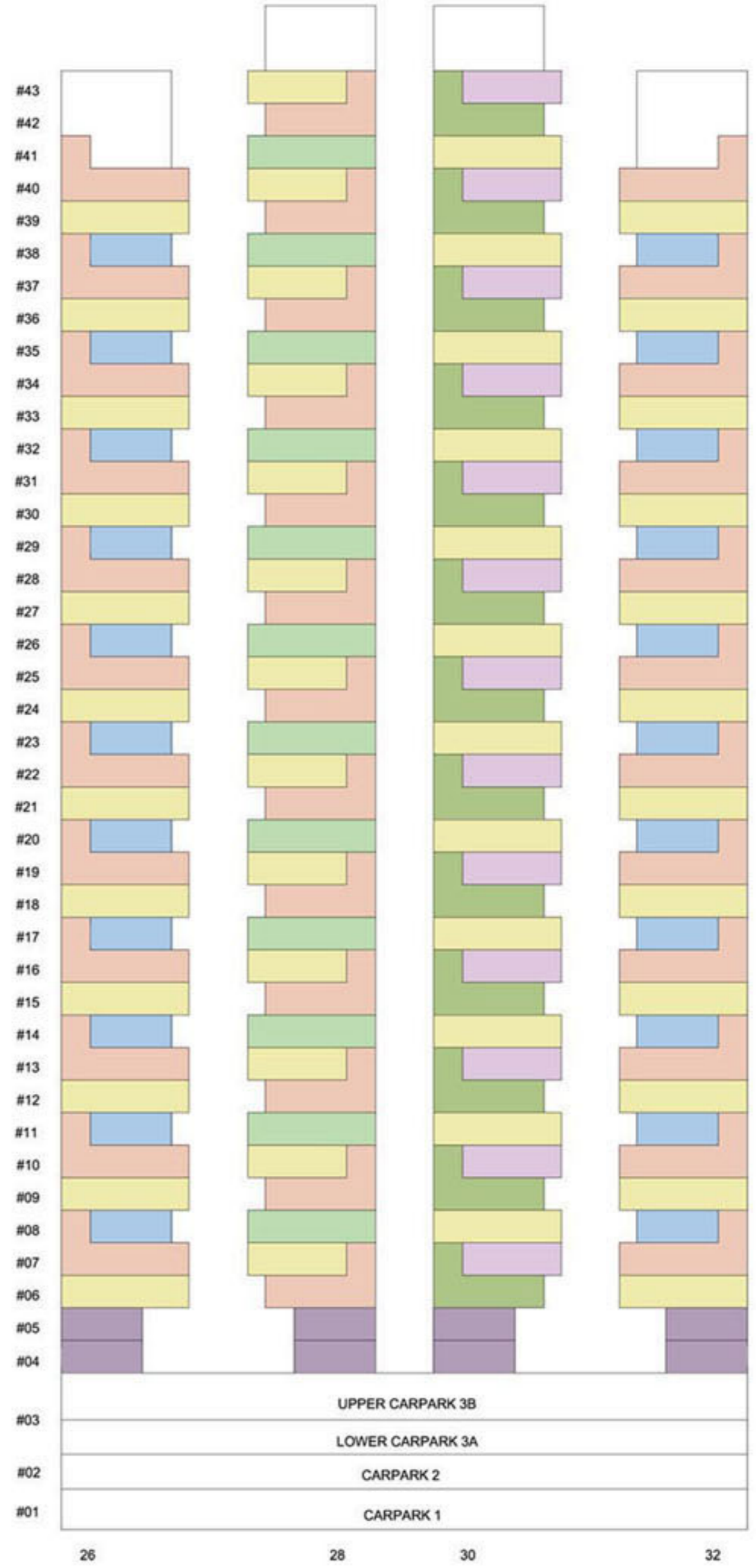
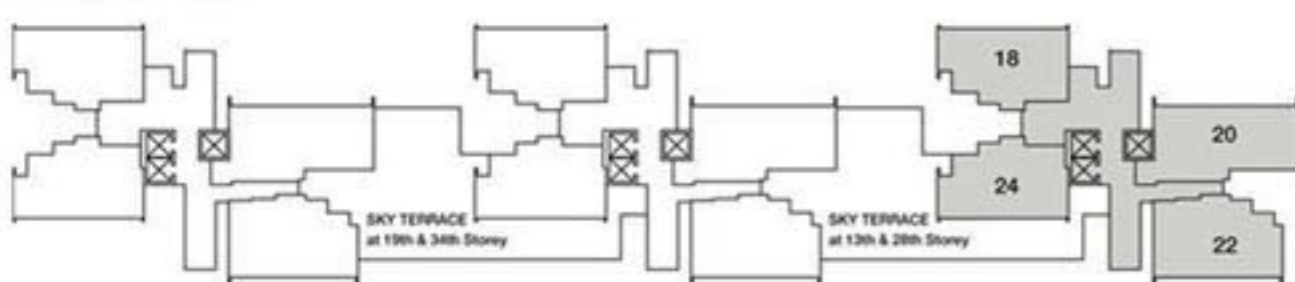
SkyTerrace @ Dawson



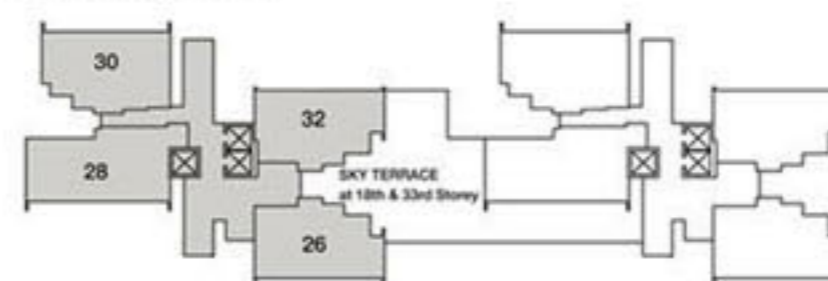
LEGEND:



BLOCK 91



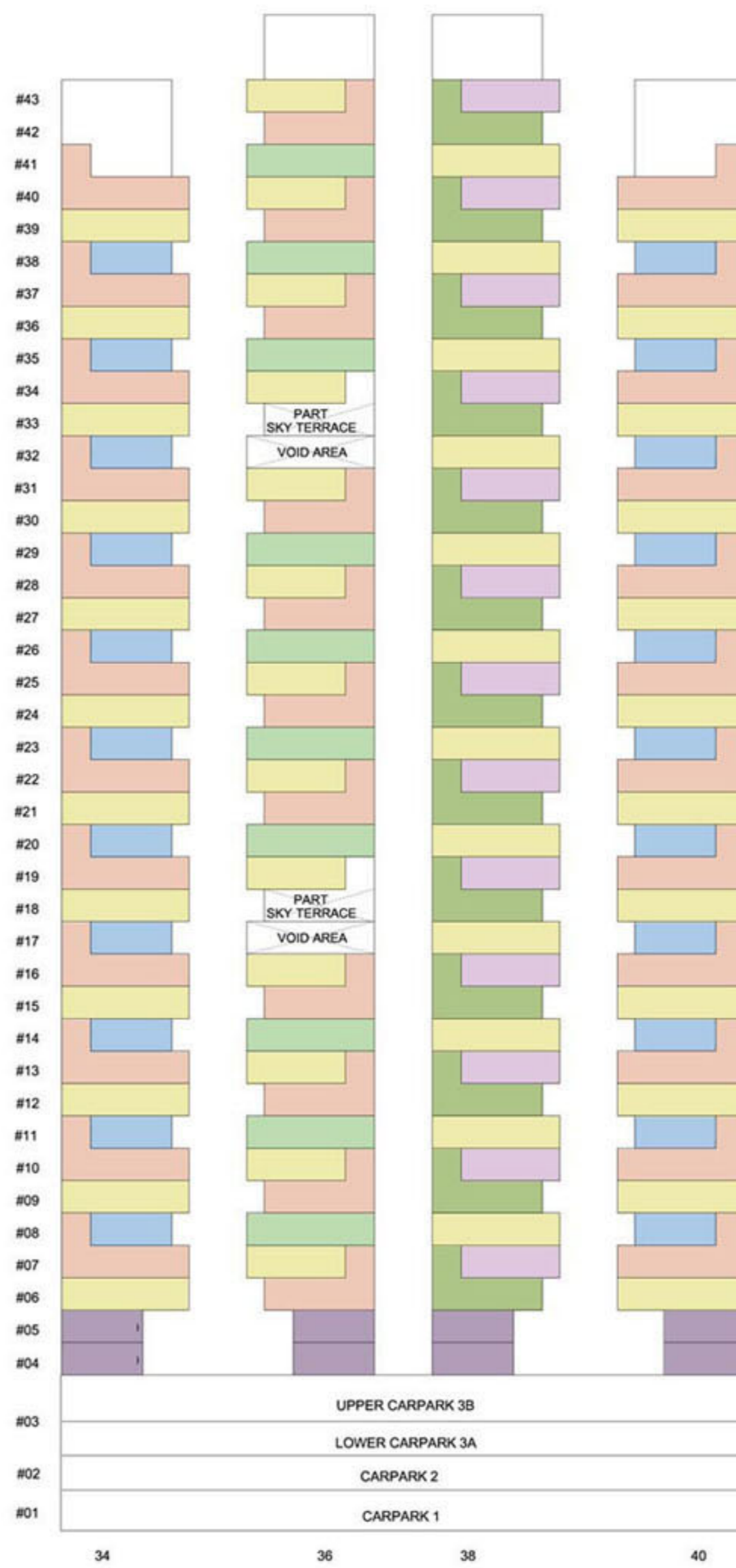
BLOCK 92



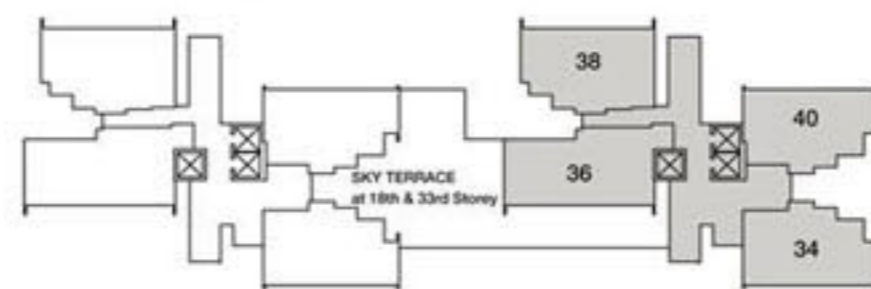
LEGEND:



SkyTerrace @ Dawson



BLOCK 93



LEGEND:

- Studio (Paired)
- Studio
- 3 Room
- 4 Room
- 4 Room Loft 1
- 4 Room Loft 2
- 5 Room
- 5 Room Loft 1

SkyTerrace @ Dawson



STUDIO APARTMENT FLOOR PLAN
APPROX. FLOOR AREA 37 sqm
 (Inclusive of Internal Floor Area 35 sqm and Air-con Ledge)



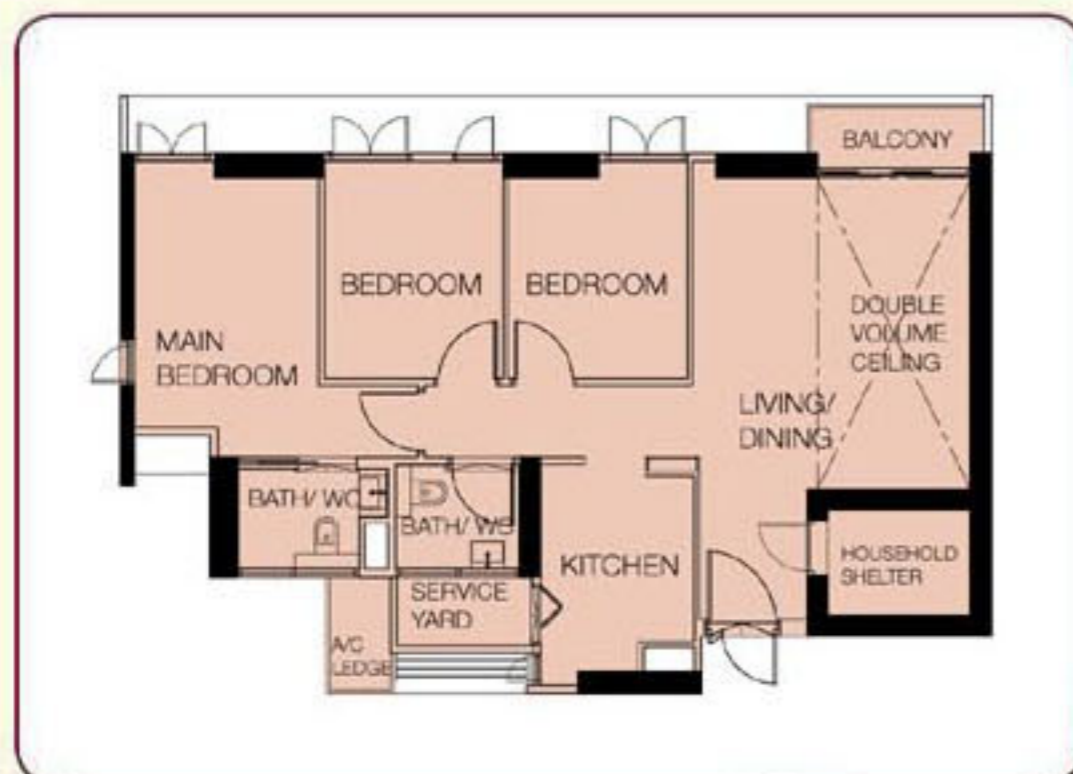
STUDIO APARTMENT FLOOR PLAN
APPROX. FLOOR AREA 44 sqm
 (Inclusive of Internal Floor Area 42 sqm and Air-con Ledge)



3-ROOM FLOOR PLAN
APPROX. FLOOR AREA 65 sqm
 (Inclusive of Internal Floor Area 63 sqm and Air-con Ledge)



4-ROOM FLOOR PLAN
APPROX. FLOOR AREA 83 sqm
 (Inclusive of Internal Floor Area 81 sqm and Air-con Ledge)



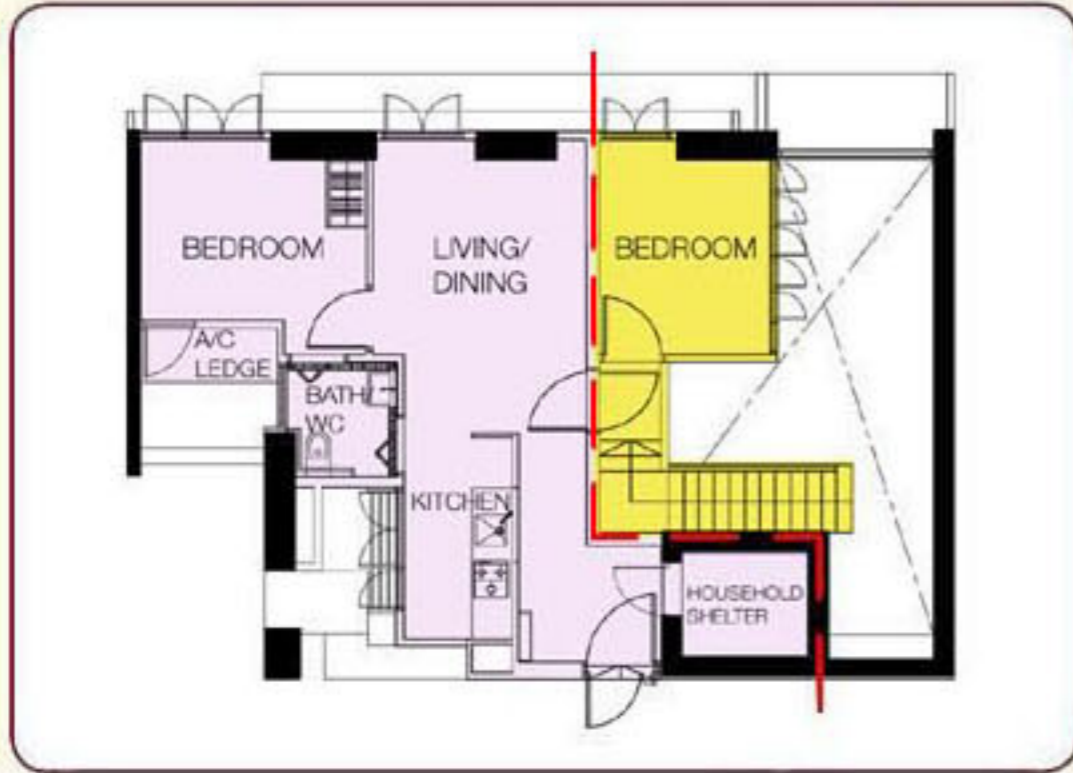
4-ROOM (LOFT 2) FLOOR PLAN
APPROX. FLOOR AREA 97 sqm
 (Inclusive of Internal Floor Area 83 sqm, Air-con Ledge and Double Volume Space)



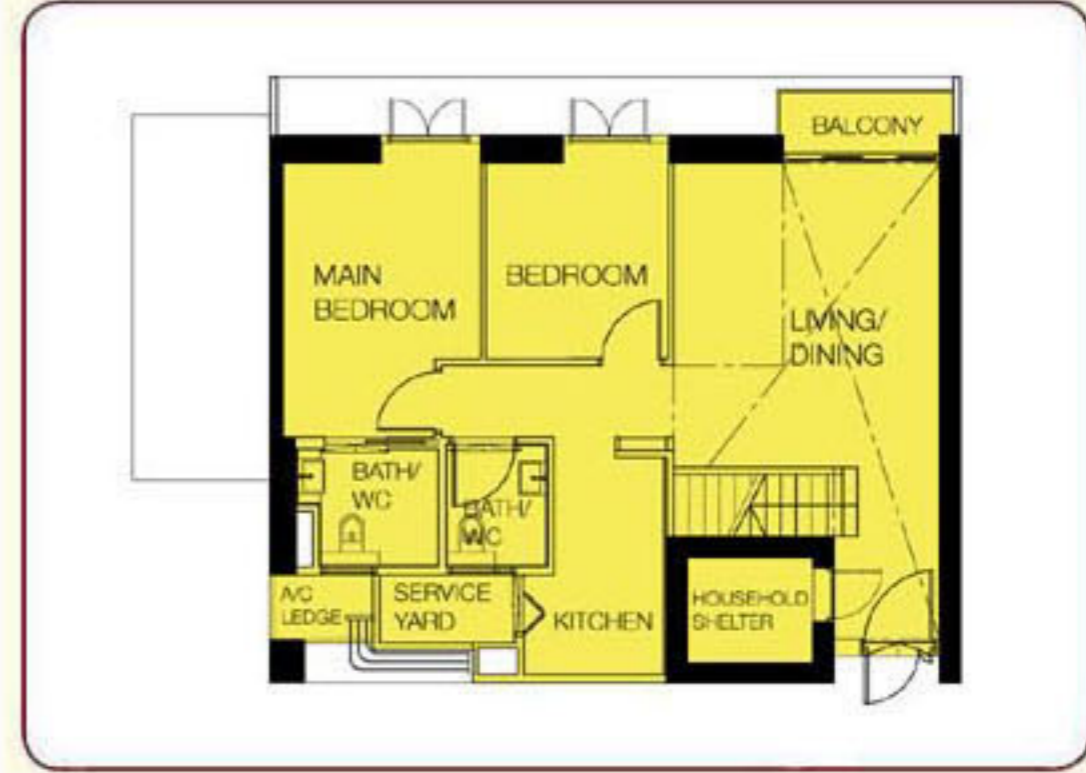
5-ROOM FLOOR PLAN
APPROX. FLOOR AREA 99 sqm
 (Inclusive of Internal Floor Area 98 sqm and Air-con Ledge)

SkyTerrace @ Dawson

**4-ROOM LOFT 1
UPPER FLOOR PLAN**

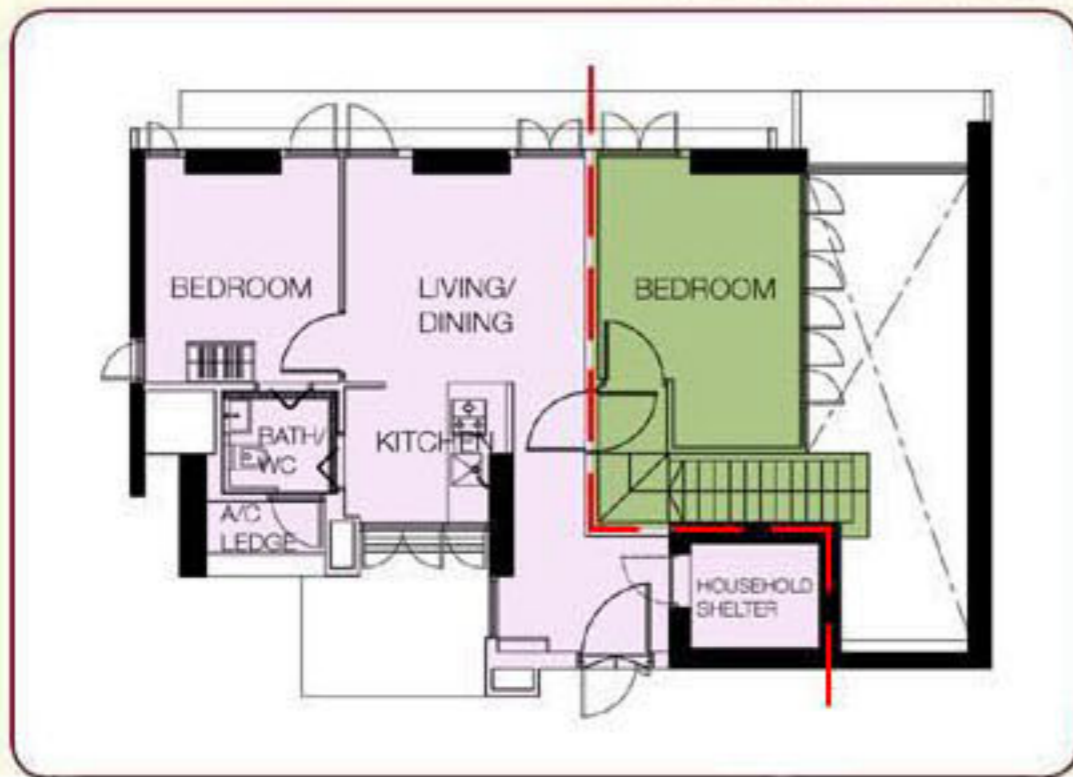


STUDIO APARTMENT FLOOR PLAN
APPROX. FLOOR AREA 44 sqm
(Inclusive of Internal Floor Area 42 sqm and Air-con Ledge)



4-ROOM (LOFT 1) LOWER FLOOR PLAN
APPROX. FLOOR AREA 109 sqm
(Inclusive of Internal Floor Area 88 sqm, Air-con Ledge and Double Volume Space)

**5-ROOM LOFT 1
UPPER FLOOR PLAN**



STUDIO APARTMENT FLOOR PLAN
APPROX. FLOOR AREA 44 sqm
(Inclusive of Internal Floor Area 42 sqm and Air-con Ledge)



5-ROOM (LOFT 1) LOWER FLOOR PLAN
APPROX. FLOOR AREA 122 sqm
(Inclusive of Internal Floor Area 103 sqm, Air-con Ledge and Double Volume Space)