



a New Beginning at

— **DAWSON SITE C** —

Blocks 94, 95 and 96



Artist's Impression

Embark on a new beginning at Dawson and relish living in a convenient location near Queenstown MRT station with the city mere minutes away.

Located in the Dawson estate, Site C is bounded by Dawson Road and Kay Siang Road.

It comprises three residential blocks ranging from 34 to 43 storeys, offering 810 units of 2-, 3-, 4- and 5-room Premium Flats.

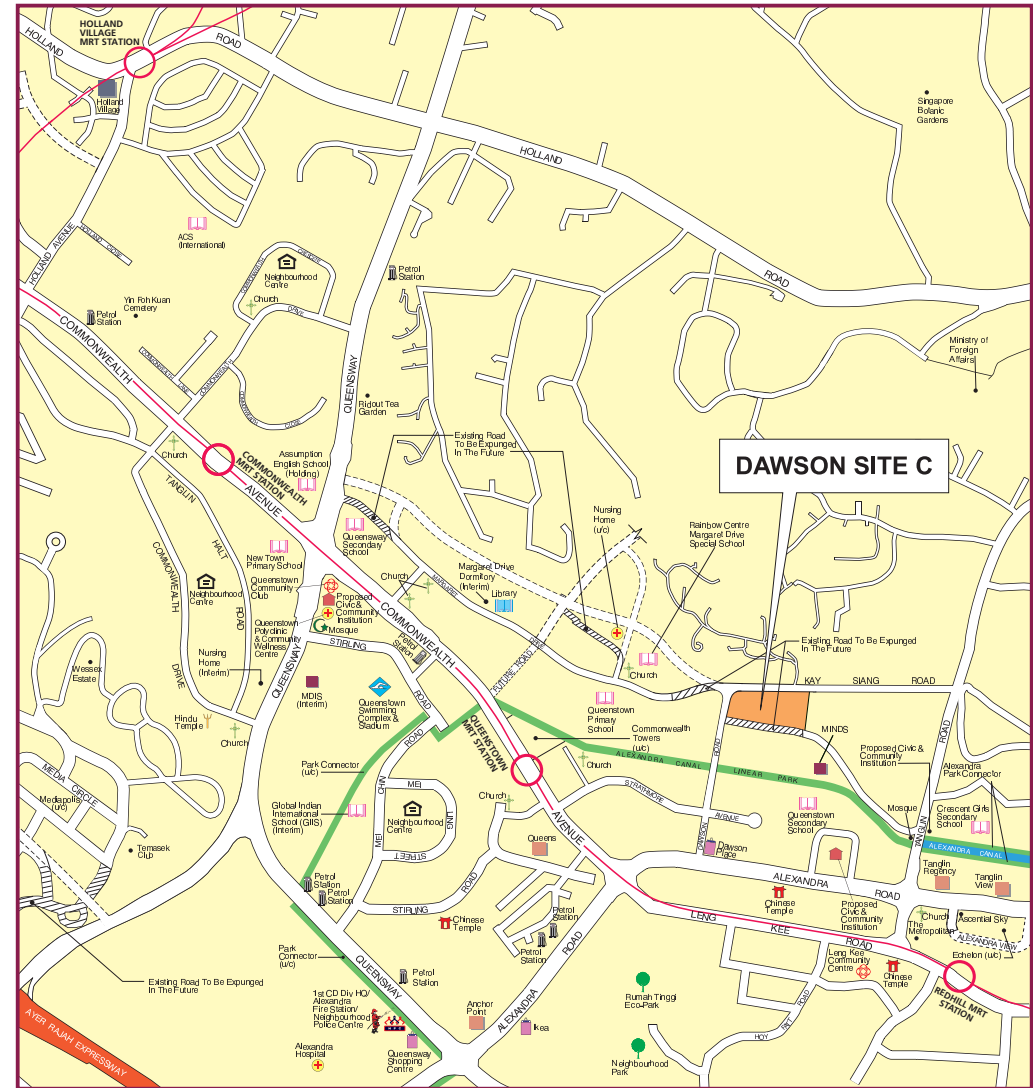


Important Notes

HDB precincts are planned to serve the evolving needs of the community. There are spaces catered for future inclusion of amenities/facilities (such as childcare centres, elderly-related facilities, education centres, residents' committee centres and day activity centres), commercial facilities (such as shops and eating houses), mechanical and electrical rooms and such other facilities depending on the prevailing needs. These spaces could be in the void decks, common property, car parks or stand-alone community buildings.

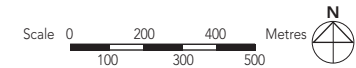
To facilitate your flat selection, we have provided information on the surrounding land use, proposed facilities and their locations in the maps and plans in this brochure. As the information provided is based on the current planning intent of the relevant government agencies, they are indicative only and are subject to review from time to time.

QUEENSTOWN



LEGEND:

- MRT Line & Station
- (u/c) Under Construction
- ==== Under Construction / Future Road



Notes:

All proposed developments are subject to change and planning approval.

Proposed Civic & Community Institution includes examples like Community Centre/Club, Association, Home for the Aged, etc., subject to change and planning approval.

The proposed facilities and their locations as shown are indicative only. The proposed facilities may include other ancillary uses allowed under URA's prevailing Development Control guidelines. For example, places of worship may also include columbarium as an ancillary use, while community centres may also include childcare centres. The implementation of the facilities is subject to review from time to time by the relevant authorities.

The information contained herein is subject to change at any time without notice and cannot form part of an offer or contract. While reasonable care has been taken in providing this information, HDB shall not be responsible in any way for any damage or loss suffered by any person whether directly or indirectly as a result of reliance on the said information or as a result of any error or omission therein.



Amenities all around

On the ground of the development, you will enjoy an array of outdoor facilities such as a children's playground as well as adult and elderly fitness stations. Rest shelters and a precinct pavilion serve as ideal spots for chitchatting with neighbours and friends.



Open to the public, the sky gardens and roof gardens within the residential blocks will serve as ideal spots for quiet contemplation. Alternatively, you can head over to the rooftop garden above the multi-storey car park. Here, you can enjoy a game or two with your neighbours at the hard court, exercise at the adult and elderly fitness stations, or watch the children play at the playground. Community gardens will be located here as well.

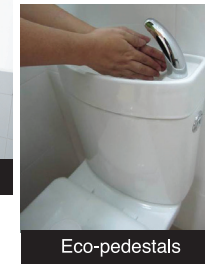


You will also find daily conveniences within easy reach as this development will come with a minimart, café and some shops.

An existing road adjacent to the development will be converted into an eco-corridor.



Separate chutes for recyclable waste



Eco-pedestals



Bicycle stands

Eco-Friendly Living

To encourage a "green" lifestyle, this development will have several eco-friendly features:

- Separate chutes for recyclable waste
- Motion sensor controlled energy efficient lighting at staircases to reduce energy consumption
- Regenerative lifts to reduce energy consumption
- Eco-pedestals in bathrooms to encourage water conservation
- Bicycle stands to encourage cycling as an environmentally friendly form of transport
- Facilitate the Car-sharing scheme by making parking spaces available for shared cars
- Use of sustainable and recycled products in the development



Contemporary Homes

Choose from a range of 2-, 3-, 4- and 5-room Premium Flats. These flats will come with full height windows in the living area and other rooms.

These flats will come with floor finishes in the kitchen, household shelter, service yard and bathrooms. Wall tiles will also be provided in the bathroom and kitchen.

All 2-room flats will be provided with a sliding partition for the bedroom and folding bathroom door. Some 3-, 4- and 5-room flats will come with a balcony.

The Optional Component Scheme is offered on an opt-in basis, to provide convenience for our buyers. The cost of the packages is added to the selling price of your selected flat.

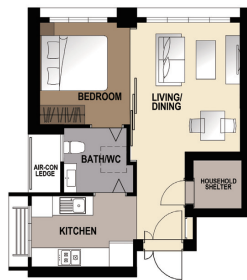
The Optional Component Scheme packages are as follows:

- Flooring in the living/ dining room and bedroom
- Internal doors and sanitary fittings in the bathrooms (wash basin with tap mixer/ vanity top^ with tap mixer and shower set with bath/ shower mixer)
^for attached bathroom of 2-, 3-, 4- and 5-room
- Kitchen partition wall (where feasible)

To provide buyers greater flexibility in terms of layout and design, all 4- and 5-room flats will come with an open kitchen concept. You can carry out the necessary extensions to the electrical, water and gas points provided in the kitchen as part of your renovation plans.

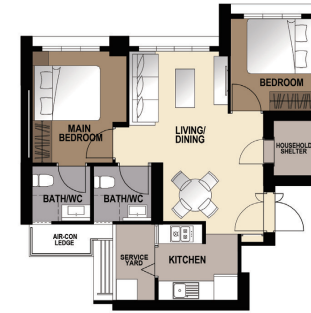
You may opt-in to have a partition wall between the living/ dining area and kitchen, if you do not want the open kitchen concept.

The service and conservancy charges (S&CC) for this project will be higher than those of the typical flats.



LAYOUT IDEAS FOR 2-ROOM

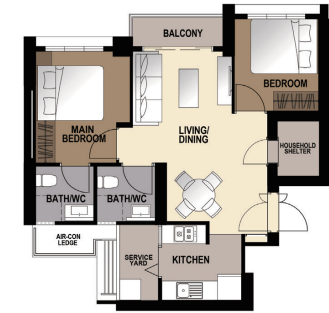
APPROX. FLOOR AREA 47 sqm
(Inclusive of Internal Floor Area of 45 sqm and Air-Con Ledge)



LAYOUT IDEAS FOR 3-ROOM

APPROX. FLOOR AREA 63 sqm
(Inclusive of Internal Floor Area of 60 sqm and Air-Con Ledge)

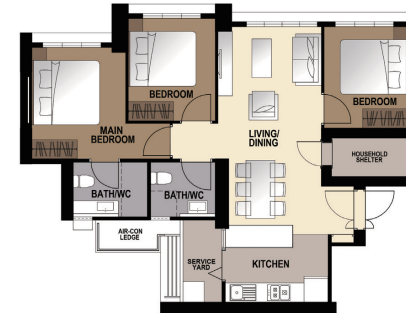
Open Kitchen Concept (Default)



LAYOUT IDEAS FOR 3-ROOM

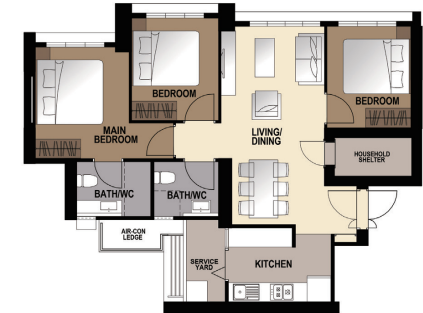
APPROX. FLOOR AREA 66 sqm
(Inclusive of Internal Floor Area of 63 sqm and Air-Con Ledge)

With Kitchen Partition Wall



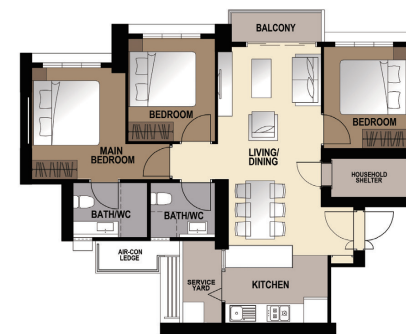
LAYOUT IDEAS FOR 4-ROOM

APPROX. FLOOR AREA 83 sqm
(Inclusive of Internal Floor Area of 80 sqm and Air-Con Ledge)



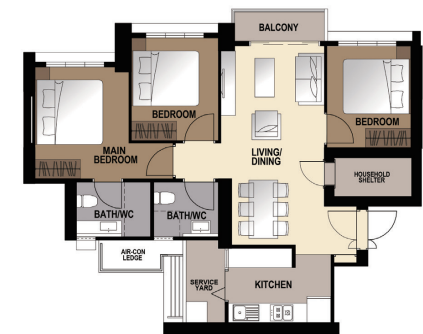
LAYOUT IDEAS FOR 4-ROOM

APPROX. FLOOR AREA 83 sqm
(Inclusive of Internal Floor Area of 80 sqm and Air-Con Ledge)



LAYOUT IDEAS FOR 4-ROOM

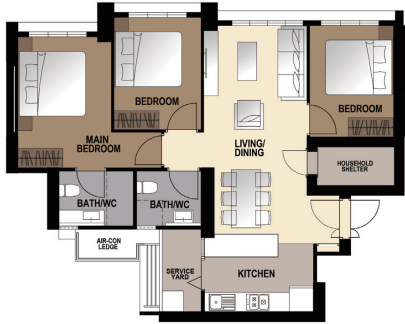
APPROX. FLOOR AREA 86 sqm
(Inclusive of Internal Floor Area of 83 sqm and Air-Con Ledge)



LAYOUT IDEAS FOR 4-ROOM

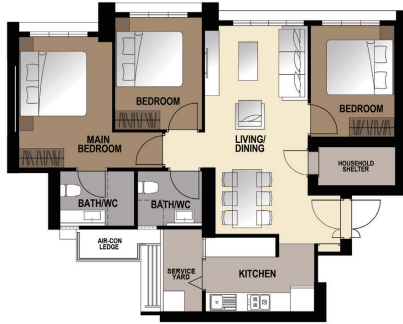
APPROX. FLOOR AREA 86 sqm
(Inclusive of Internal Floor Area of 83 sqm and Air-Con Ledge)

Open Kitchen Concept (Default)



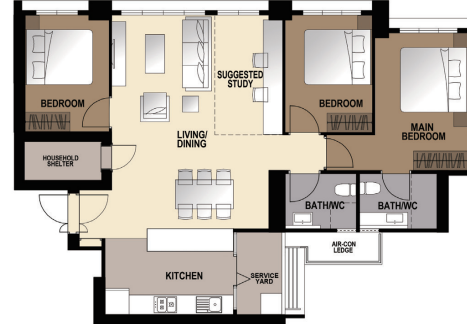
LAYOUT IDEAS FOR 4-ROOM
 APPROX. FLOOR AREA 88 sqm
 (Inclusive of Internal Floor Area of 85 sqm and Air-Con Ledge)

With Kitchen Partition Wall



LAYOUT IDEAS FOR 4-ROOM
 APPROX. FLOOR AREA 88 sqm
 (Inclusive of Internal Floor Area of 85 sqm and Air-Con Ledge)

Open Kitchen Concept (Default)

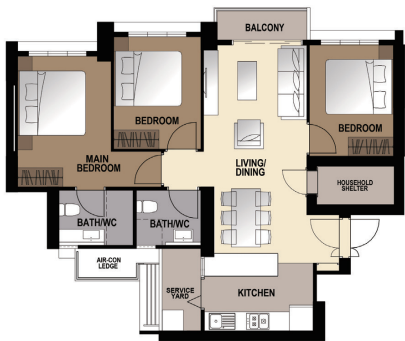


LAYOUT IDEAS FOR 5-ROOM
 APPROX. FLOOR AREA 108 sqm
 (Inclusive of Internal Floor Area of 105 sqm and Air-Con Ledge)

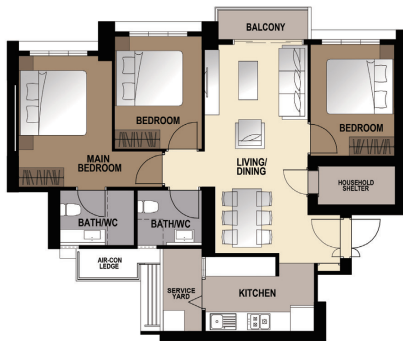
With Kitchen Partition Wall



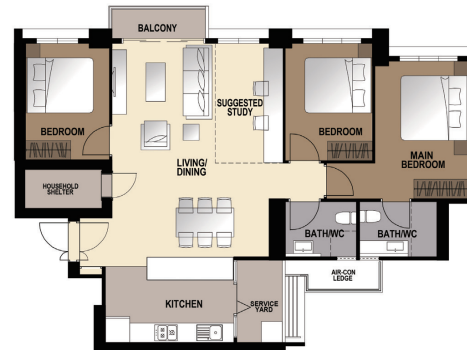
LAYOUT IDEAS FOR 5-ROOM
 APPROX. FLOOR AREA 108 sqm
 (Inclusive of Internal Floor Area of 105 sqm and Air-Con Ledge)



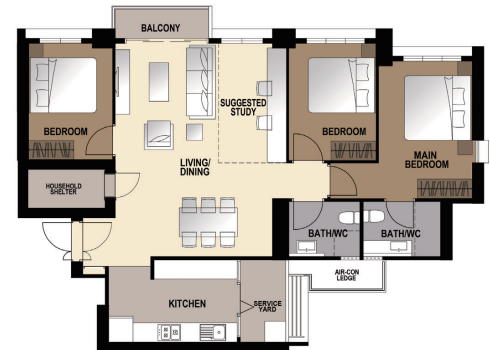
LAYOUT IDEAS FOR 4-ROOM
 APPROX. FLOOR AREA 91 sqm
 (Inclusive of Internal Floor Area of 88 sqm and Air-Con Ledge)



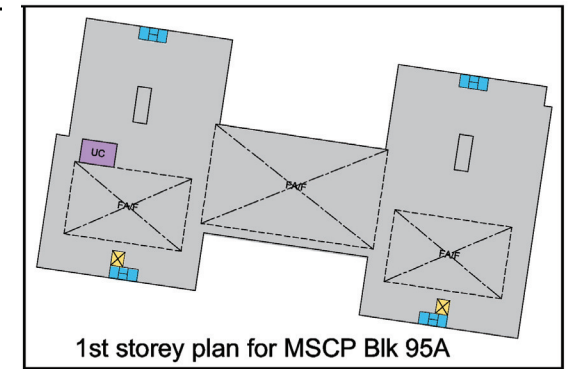
LAYOUT IDEAS FOR 4-ROOM
 APPROX. FLOOR AREA 91 sqm
 (Inclusive of Internal Floor Area of 88 sqm and Air-Con Ledge)



LAYOUT IDEAS FOR 5-ROOM
 APPROX. FLOOR AREA 111 sqm
 (Inclusive of Internal Floor Area of 108 sqm and Air-Con Ledge)



LAYOUT IDEAS FOR 5-ROOM
 APPROX. FLOOR AREA 111 sqm
 (Inclusive of Internal Floor Area of 108 sqm and Air-Con Ledge)

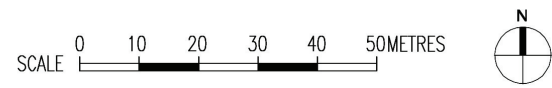


- LEGEND**
- 2-Room
 - 3-Room
 - 4-Room
 - 5-Room
 - Cafe (C) / Minimart (MM) / Shop (S) at 1st Storey
 - Future Amenities / Facilities (FA/F) at 1st Storey
 - Surrounding Buildings / Structures
 - Trellis
 - Reserved for Development / Existing Development
 - Linkway / Link Bridge (LB) / Precinct Pavilion / Drop-off Porch/ Shelter (S)
 - Children Playground (PG) / Hardcourt (HC)
 - Adult Fitness Station (AFS) / Elderly Fitness Station (EFS)
 - Electrical Sub-Station (ESS) at 1st Storey
 - Utility Centre (UC) at 1st storey
 - Multi-storey Carpark
 - Driveway
 - Open Space
 - Staircase
 - Drainage Reserve
 - Centralised Refuse Chute / Chute for Recyclable Refuse
 - Corridor
 - Lift
 - Service Bay

Block Number	Number of Storeys	2-Room	3-Room	4-Room	5-Room	Total	Lift opens at
94	38/43	-	122	148	-	270	Every storey
95	34/40	104	152	-	-	256	Every storey
96	38/43	-	136	74	74	284	Every storey
Total		104	410	222	74	810	

Dawson Site C

Applicants are encouraged to visit the place before booking a flat.



Notes:
 All proposed developments are subject to change and planning approval.
 The proposed facilities and their locations as shown are indicative only. The proposed facilities may include other ancillary uses allowed under URA's prevailing Development Control guidelines. For example, places of worship may also include columbarium as an ancillary use, while community centres may also include childcare centres. The implementation of the facilities is subject to review from time to time by the relevant authorities.
 The use of the void deck in any apartment block, common property (such as precinct pavilion), car park or stand-alone community building for future amenities/facilities (such as childcare centres, elderly related facilities, education centres, residents' committee centres and day activity centres), commercial facilities (such as shops and eating houses), mechanical and electrical rooms and such other facilities is subject to review from time to time.

The information contained herein is subject to change at any time without notice and cannot form part of an offer or contract. While reasonable care has been taken in providing this information, HDB shall not be responsible in any way for any damage or loss suffered by any person whether directly or indirectly as a result of reliance on the said information or as a result of any error or omission therein.



BLOCK 94 (2ND STOREY FLOOR PLAN)

Units at and above 3rd storey are higher than the main roof level of Block 94A
 Units at and above 9th storey are higher than the main roof garden level of Block 95A

LEGEND :

4 ROOM

WINDOW LEGEND :

W1 – FULL HEIGHT WINDOW (APPROX. 300mm HIGH PARAPET WALL)

UNLESS OTHERWISE INDICATED, ALL WINDOWS WILL BE STANDARD HEIGHT WINDOWS

The coloured floor plan is not intended to demarcate the boundary of the flat.

SCALE 0 2 4 6 8 10 METRES



BLOCK 94 (3RD TO 7TH STOREY FLOOR PLAN)

Units at and above 3rd storey are higher than the main roof level of Block 94A
 Units at and above 9th storey are higher than the main roof garden level of Block 95A

LEGEND :

4 ROOM

WINDOW LEGEND :

W1 – FULL HEIGHT WINDOW (APPROX. 300mm HIGH PARAPET WALL)

UNLESS OTHERWISE INDICATED, ALL WINDOWS WILL BE STANDARD HEIGHT WINDOWS

The coloured floor plan is not intended to demarcate the boundary of the flat.

SCALE 0 2 4 6 8 10 METRES



BLOCK 94 (8TH STOREY FLOOR PLAN)

Units at and above 3rd storey are higher than the main roof level of Block 94A
 Units at and above 9th storey are higher than the main roof garden level of Block 95A

LEGEND :

4 ROOM

WINDOW LEGEND :

W1 – FULL HEIGHT WINDOW (APPROX. 300mm HIGH PARAPET WALL)

UNLESS OTHERWISE INDICATED, ALL WINDOWS WILL BE STANDARD HEIGHT WINDOWS

The coloured floor plan is not intended to demarcate the boundary of the flat.

SCALE 0 2 4 6 8 10 METRES



BLOCK 94 (9TH TO 15TH STOREY FLOOR PLAN)

Units at and above 3rd storey are higher than the main roof level of Block 94A
 Units at and above 9th storey are higher than the main roof garden level of Block 95A

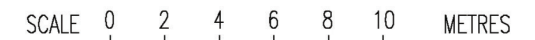
LEGEND :

- 3 ROOM
- 4 ROOM

WINDOW LEGEND :

W1 – FULL HEIGHT WINDOW (APPROX. 300mm HIGH PARAPET WALL)
 UNLESS OTHERWISE INDICATED, ALL WINDOWS WILL BE STANDARD HEIGHT WINDOWS

The coloured floor plan is not intended to demarcate the boundary of the flat.





BLOCK 94 (17TH & 18TH STOREY FLOOR PLAN)

Units at and above 3rd storey are higher than the main roof level of Block 94A
 Units at and above 9th storey are higher than the main roof garden level of Block 95A

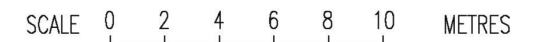
LEGEND :

- 4 ROOM
- 3 ROOM

WINDOW LEGEND :

W1 – FULL HEIGHT WINDOW (APPROX. 300mm HIGH PARAPET WALL)
 UNLESS OTHERWISE INDICATED, ALL WINDOWS WILL BE STANDARD HEIGHT WINDOWS

The coloured floor plan is not intended to demarcate the boundary of the flat.





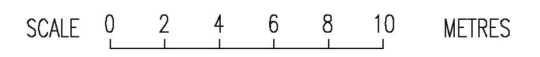
BLOCK 94 (19TH STOREY FLOOR PLAN)

Units at and above 3rd storey are higher than the main roof level of Block 94A
 Units at and above 9th storey are higher than the main roof garden level of Block 95A

LEGEND :
 3 ROOM
 4 ROOM

WINDOW LEGEND :
 W1 – FULL HEIGHT WINDOW (APPROX. 300mm HIGH PARAPET WALL)
 UNLESS OTHERWISE INDICATED, ALL WINDOWS WILL BE STANDARD HEIGHT WINDOWS

The coloured floor plan is not intended to demarcate the boundary of the flat.





BLOCK 94 (20TH TO 32ND & 34TH TO 38TH STOREY FLOOR PLAN)

Units at and above 3rd storey are higher than the main roof level of Block 94A
 Units at and above 9th storey are higher than the main roof garden level of Block 95A

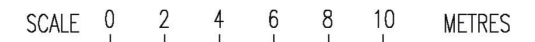
LEGEND :

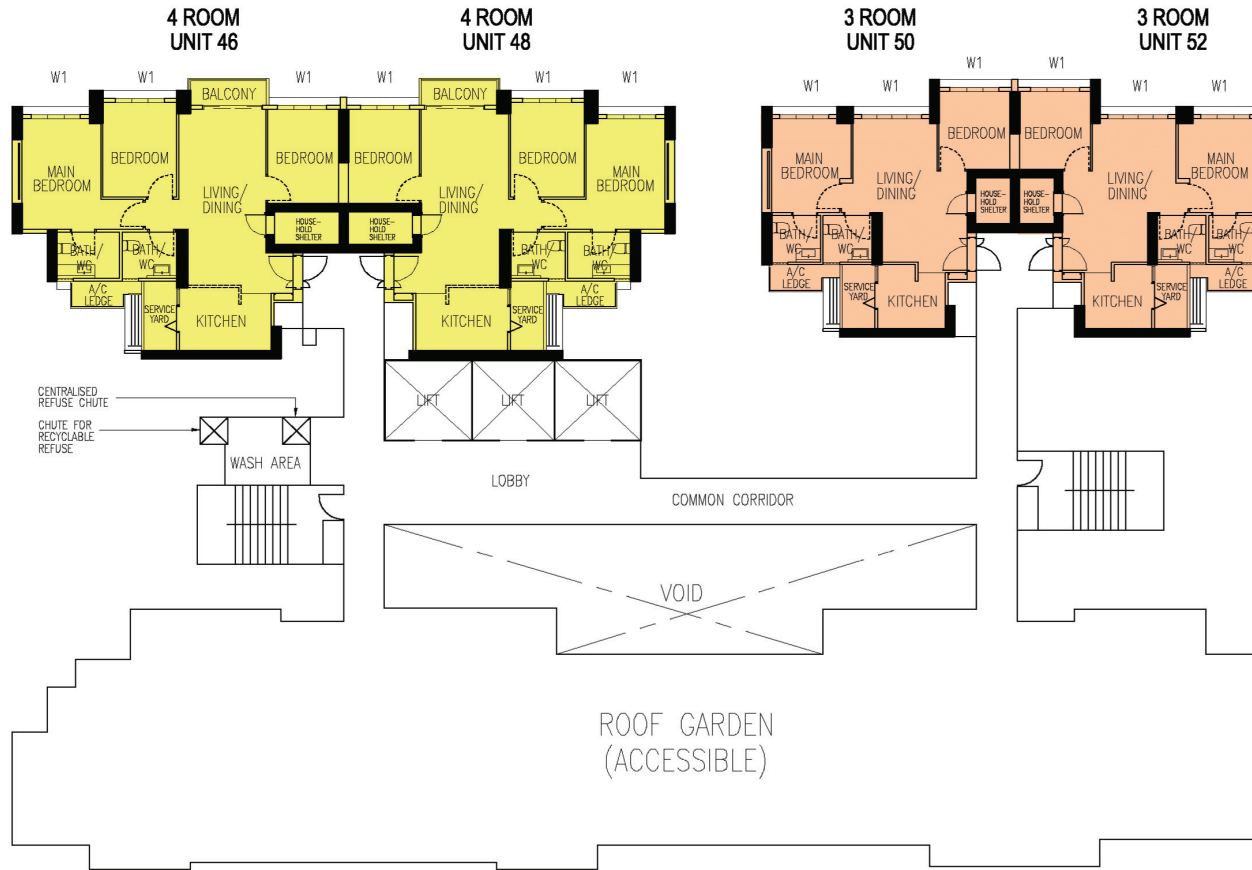
- 3 ROOM
- 4 ROOM

WINDOW LEGEND :

W1 – FULL HEIGHT WINDOW (APPROX. 300mm HIGH PARAPET WALL)
 UNLESS OTHERWISE INDICATED, ALL WINDOWS WILL BE STANDARD HEIGHT WINDOWS

The coloured floor plan is not intended to demarcate the boundary of the flat.





BLOCK 94 (39TH STOREY FLOOR PLAN)

Units at and above 3rd storey are higher than the main roof level of Block 94A
 Units at and above 9th storey are higher than the main roof garden level of Block 95A

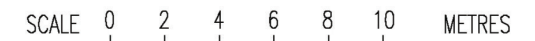
LEGEND :

- 3 ROOM
- 4 ROOM

WINDOW LEGEND :

W1 – FULL HEIGHT WINDOW (APPROX. 300mm HIGH PARAPET WALL)
 UNLESS OTHERWISE INDICATED, ALL WINDOWS WILL BE STANDARD HEIGHT WINDOWS

The coloured floor plan is not intended to demarcate the boundary of the flat.





BLOCK 94 (40TH TO 43RD STOREY FLOOR PLAN)

Units at and above 3rd storey are higher than the main roof level of Block 94A
 Units at and above 9th storey are higher than the main roof garden level of Block 95A

LEGEND :

- 3 ROOM
- 4 ROOM

WINDOW LEGEND :

W1 – FULL HEIGHT WINDOW (APPROX. 300mm HIGH PARAPET WALL)
 UNLESS OTHERWISE INDICATED, ALL WINDOWS WILL BE STANDARD HEIGHT WINDOWS

The coloured floor plan is not intended to demarcate the boundary of the flat.

SCALE 0 2 4 6 8 10 METRES



BLOCK 95 (2ND TO 7TH STOREY FLOOR PLAN)

Units at and above 9th storey are higher than the main roof garden level of Block 95A

LEGEND :

3 ROOM

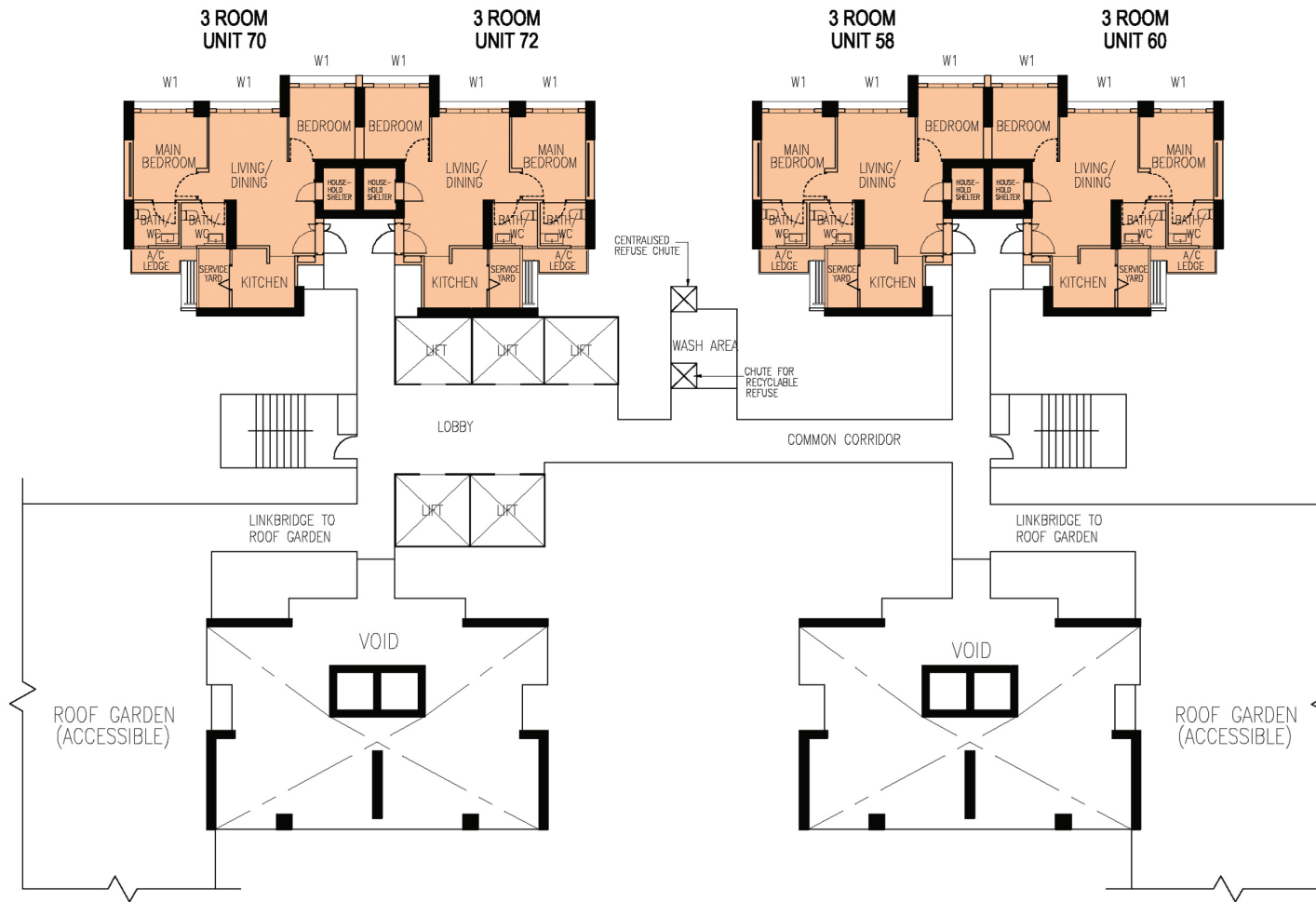
WINDOW LEGEND :

W1 – FULL HEIGHT WINDOW (APPROX. 300mm HIGH PARAPET WALL)

UNLESS OTHERWISE INDICATED, ALL WINDOWS WILL BE STANDARD HEIGHT WINDOWS

The coloured floor plan is not intended to demarcate the boundary of the flat.

SCALE 0 2 4 6 8 10 METRES



BLOCK 95 (8TH STOREY FLOOR PLAN)

Units at and above 9th storey are higher than the main roof garden level of Block 95A

LEGEND :

3 ROOM

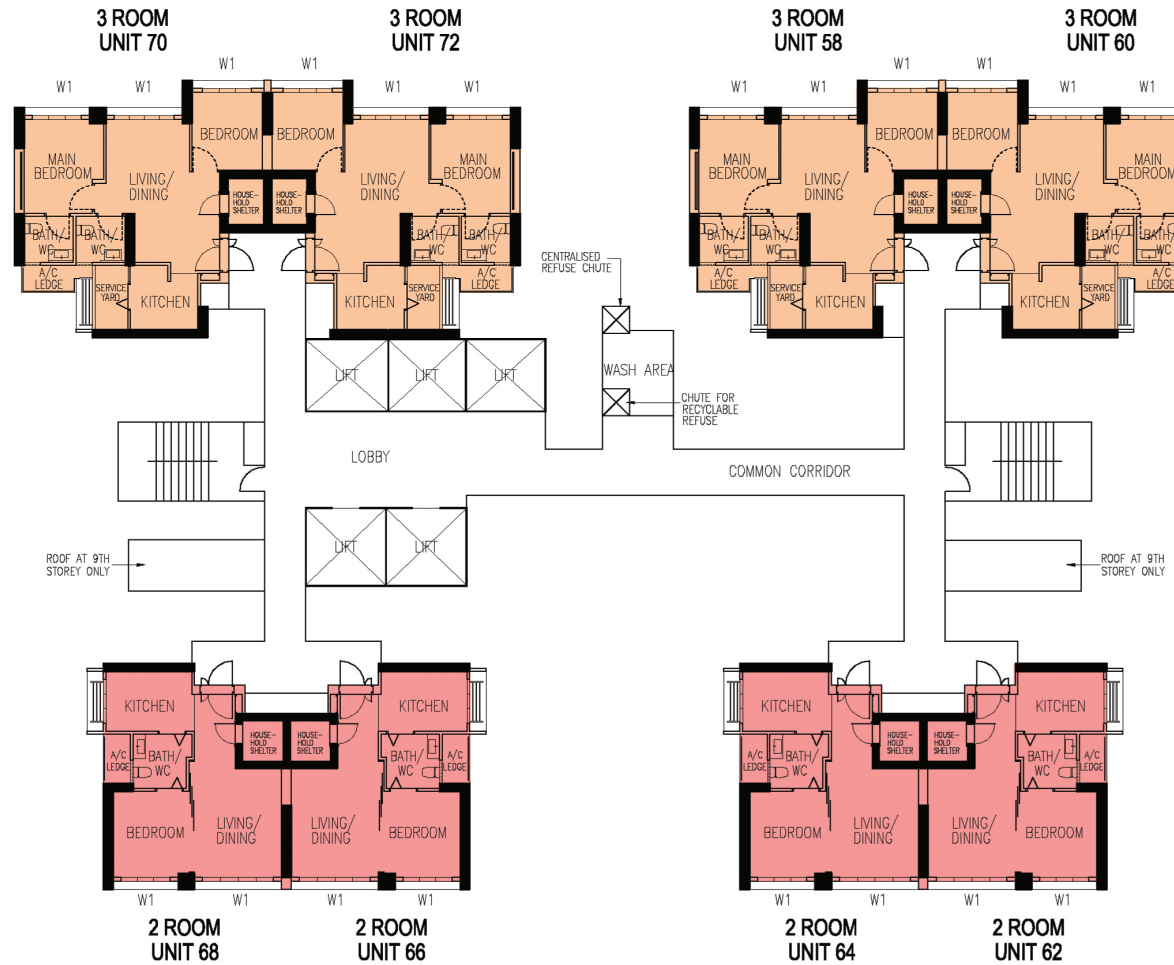
WINDOW LEGEND :

W1 – FULL HEIGHT WINDOW (APPROX. 300mm HIGH PARAPET WALL)

UNLESS OTHERWISE INDICATED, ALL WINDOWS WILL BE STANDARD HEIGHT WINDOWS

The coloured floor plan is not intended to demarcate the boundary of the flat.

SCALE 0 2 4 6 8 10 METRES



BLOCK 95 (9TH TO 20TH STOREY FLOOR PLAN)

Units at and above 9th storey are higher than the main roof garden level of Block 95A

LEGEND :

- 2 ROOM
- 3 ROOM

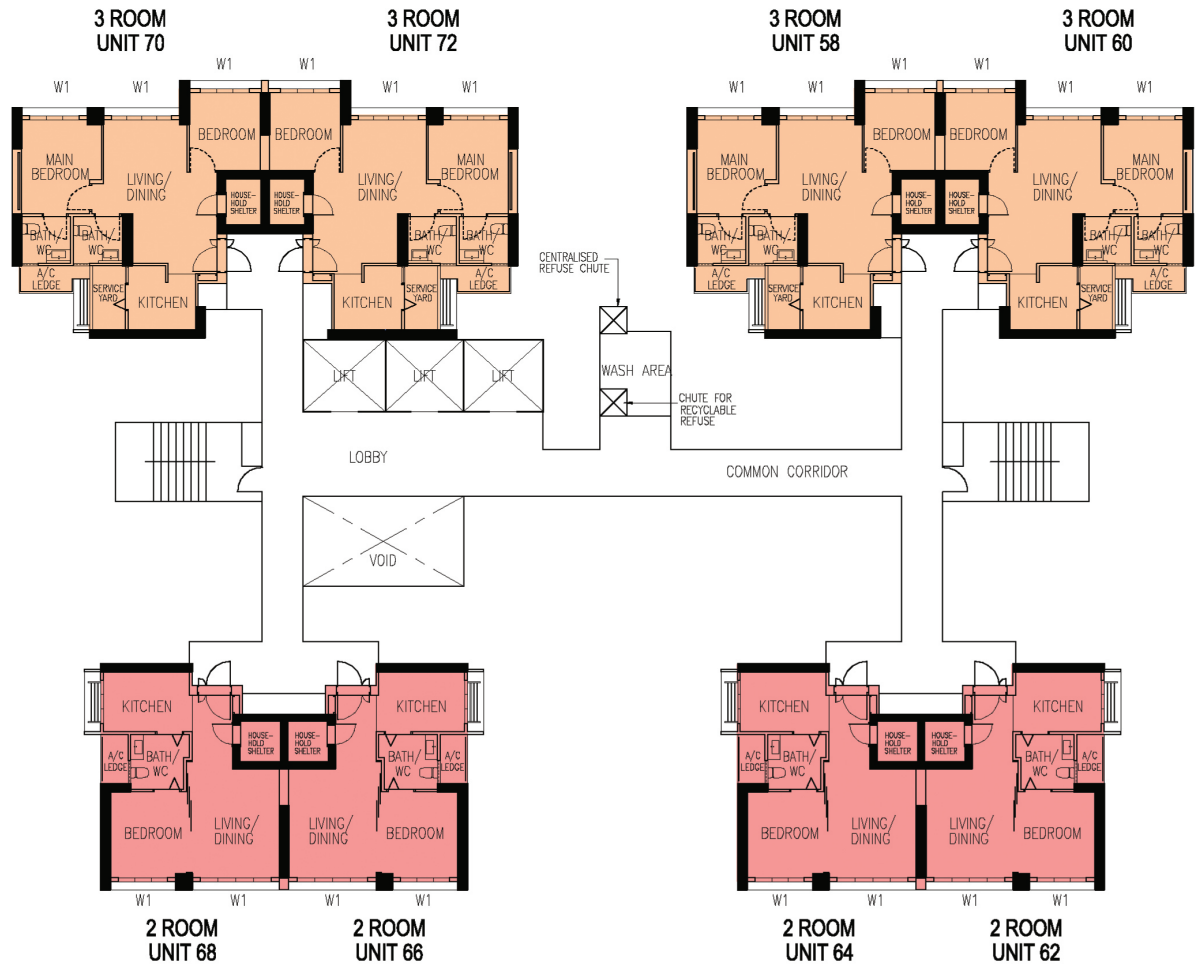
WINDOW LEGEND :

W1 – FULL HEIGHT WINDOW (APPROX. 300mm HIGH PARAPET WALL)

UNLESS OTHERWISE INDICATED, ALL WINDOWS WILL BE STANDARD HEIGHT WINDOWS

The coloured floor plan is not intended to demarcate the boundary of the flat.

SCALE 0 2 4 6 8 10 METRES



LEGEND :

- 2 ROOM
- 3 ROOM

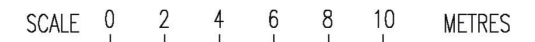
WINDOW LEGEND :

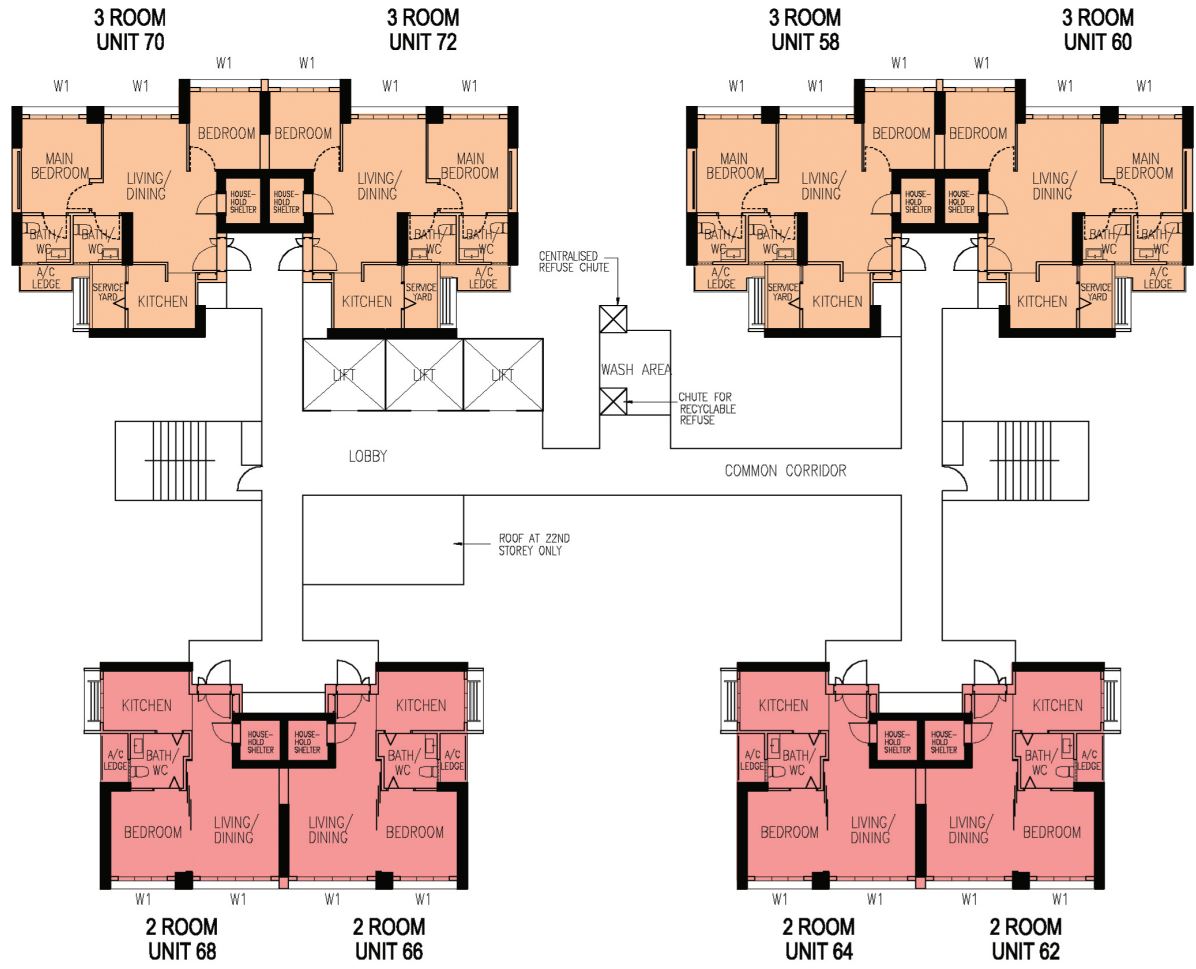
W1 – FULL HEIGHT WINDOW (APPROX. 300mm HIGH PARAPET WALL)
 UNLESS OTHERWISE INDICATED, ALL WINDOWS WILL BE STANDARD HEIGHT WINDOWS

The coloured floor plan is not intended to demarcate the boundary of the flat.

BLOCK 95 (21ST STOREY FLOOR PLAN)

Units at and above 9th storey are higher than the main roof garden level of Block 95A





LEGEND :

- 2 ROOM
- 3 ROOM

WINDOW LEGEND :

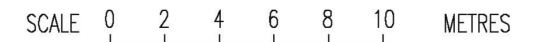
W1 – FULL HEIGHT WINDOW (APPROX. 300mm HIGH PARAPET WALL)

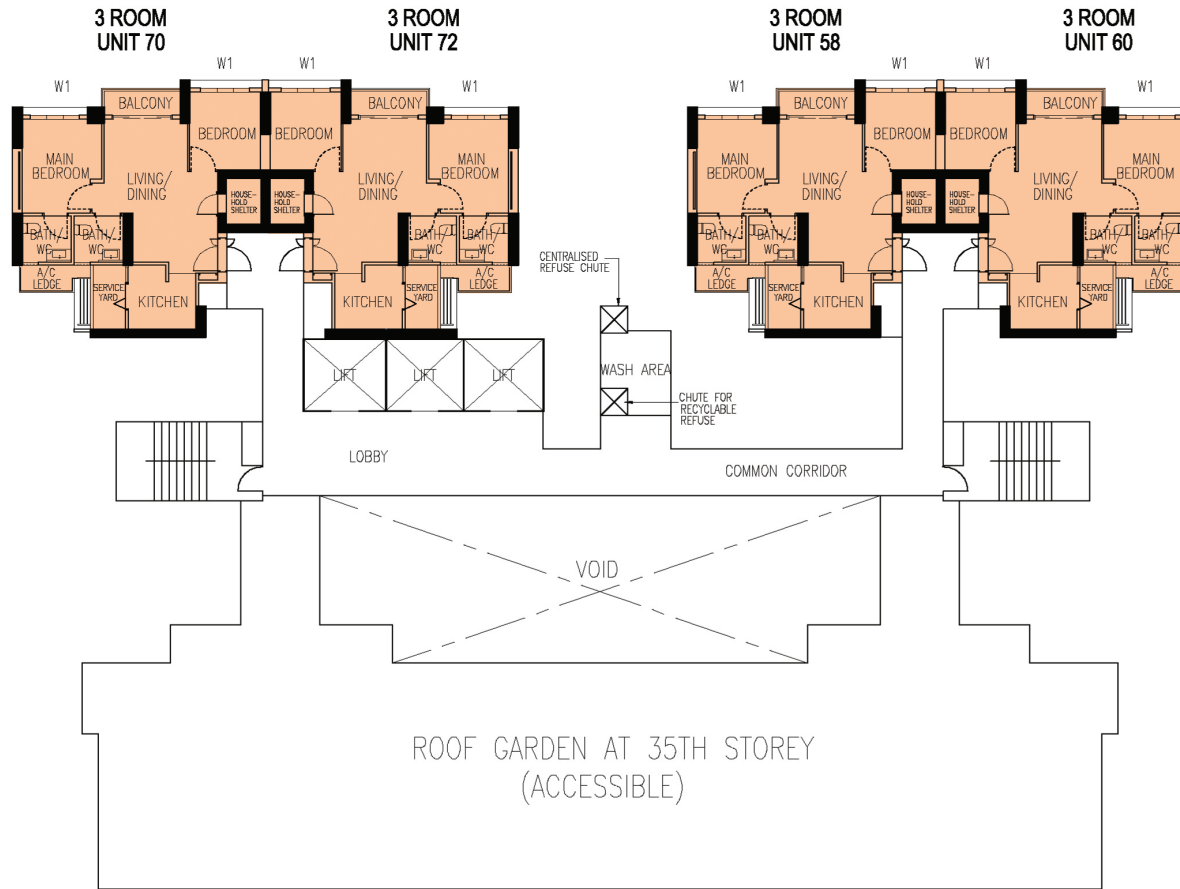
UNLESS OTHERWISE INDICATED, ALL WINDOWS WILL BE STANDARD HEIGHT WINDOWS

The coloured floor plan is not intended to demarcate the boundary of the flat.

BLOCK 95 (22ND TO 34TH STOREY FLOOR PLAN)

Units at and above 9th storey are higher than the main roof garden level of Block 95A





BLOCK 95 (36TH TO 40TH STOREY FLOOR PLAN)

Units at and above 9th storey are higher than the main roof garden level of Block 95A

LEGEND :

3 ROOM

WINDOW LEGEND :

W1 – FULL HEIGHT WINDOW (APPROX. 300mm HIGH PARAPET WALL)

UNLESS OTHERWISE INDICATED, ALL WINDOWS WILL BE STANDARD HEIGHT WINDOWS

The coloured floor plan is not intended to demarcate the boundary of the flat.

SCALE 0 2 4 6 8 10 METRES



LEGEND :

- 3 ROOM
- 4 ROOM
- 5 ROOM

BLOCK 96 (2ND STOREY FLOOR PLAN)

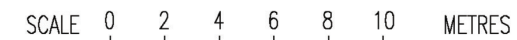
Units at and above 9th storey are higher than the main roof garden level of Block 95A

WINDOW LEGEND :

W1 – FULL HEIGHT WINDOW (APPROX. 300mm HIGH PARAPET WALL)

UNLESS OTHERWISE INDICATED, ALL WINDOWS WILL BE STANDARD HEIGHT WINDOWS

The coloured floor plan is not intended to demarcate the boundary of the flat.





LEGEND :

- 3 ROOM
- 4 ROOM
- 5 ROOM

BLOCK 96 (3RD TO 7TH STOREY FLOOR PLAN)

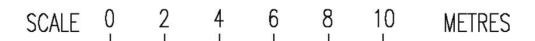
Units at and above 9th storey are higher than the main roof garden level of Block 95A

WINDOW LEGEND :

W1 – FULL HEIGHT WINDOW (APPROX. 300mm HIGH PARAPET WALL)

UNLESS OTHERWISE INDICATED, ALL WINDOWS WILL BE STANDARD HEIGHT WINDOWS

The coloured floor plan is not intended to demarcate the boundary of the flat.





LEGEND :

- 3 ROOM
- 4 ROOM
- 5 ROOM

BLOCK 96 (8TH STOREY FLOOR PLAN)

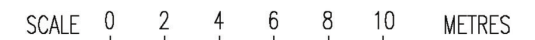
Units at and above 9th storey are higher than the main roof garden level of Block 95A

WINDOW LEGEND :

W1 – FULL HEIGHT WINDOW (APPROX. 300mm HIGH PARAPET WALL)

UNLESS OTHERWISE INDICATED, ALL WINDOWS WILL BE STANDARD HEIGHT WINDOWS

The coloured floor plan is not intended to demarcate the boundary of the flat.





LEGEND :

- 3 ROOM
- 4 ROOM
- 5 ROOM

BLOCK 96 (9TH TO 15TH STOREY FLOOR PLAN)

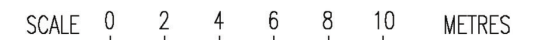
Units at and above 9th storey are higher than the main roof garden level of Block 95A

WINDOW LEGEND :

W1 – FULL HEIGHT WINDOW (APPROX. 300mm HIGH PARAPET WALL)

UNLESS OTHERWISE INDICATED, ALL WINDOWS WILL BE STANDARD HEIGHT WINDOWS

The coloured floor plan is not intended to demarcate the boundary of the flat.





LEGEND :

- 3 ROOM
- 4 ROOM
- 5 ROOM

BLOCK 96 (17TH TO 24TH STOREY FLOOR PLAN)

Units at and above 9th storey are higher than the main roof garden level of Block 95A

WINDOW LEGEND :

W1 – FULL HEIGHT WINDOW (APPROX. 300mm HIGH PARAPET WALL)

UNLESS OTHERWISE INDICATED, ALL WINDOWS WILL BE STANDARD HEIGHT WINDOWS

The coloured floor plan is not intended to demarcate the boundary of the flat.

SCALE 0 2 4 6 8 10 METRES



LEGEND :

- 3 ROOM
- 4 ROOM
- 5 ROOM

BLOCK 96 (25TH STOREY FLOOR PLAN)

Units at and above 9th storey are higher than the main roof garden level of Block 95A

WINDOW LEGEND :

W1 – FULL HEIGHT WINDOW (APPROX. 300mm HIGH PARAPET WALL)

UNLESS OTHERWISE INDICATED, ALL WINDOWS WILL BE STANDARD HEIGHT WINDOWS

The coloured floor plan is not intended to demarcate the boundary of the flat.

SCALE 0 2 4 6 8 10 METRES



LEGEND :

- 3 ROOM
- 4 ROOM
- 5 ROOM

BLOCK 96 (26TH TO 32ND & 34TH TO 38TH STOREY FLOOR PLAN)

Units at and above 9th storey are higher than the main roof garden level of Block 95A

WINDOW LEGEND :

W1 – FULL HEIGHT WINDOW (APPROX. 300mm HIGH PARAPET WALL)

UNLESS OTHERWISE INDICATED, ALL WINDOWS WILL BE STANDARD HEIGHT WINDOWS

The coloured floor plan is not intended to demarcate the boundary of the flat.

SCALE 0 2 4 6 8 10 METRES



LEGEND :

- 3 ROOM
- 4 ROOM
- 5 ROOM

BLOCK 96 (39TH STOREY FLOOR PLAN)

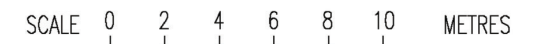
Units at and above 9th storey are higher than the main roof garden level of Block 95A

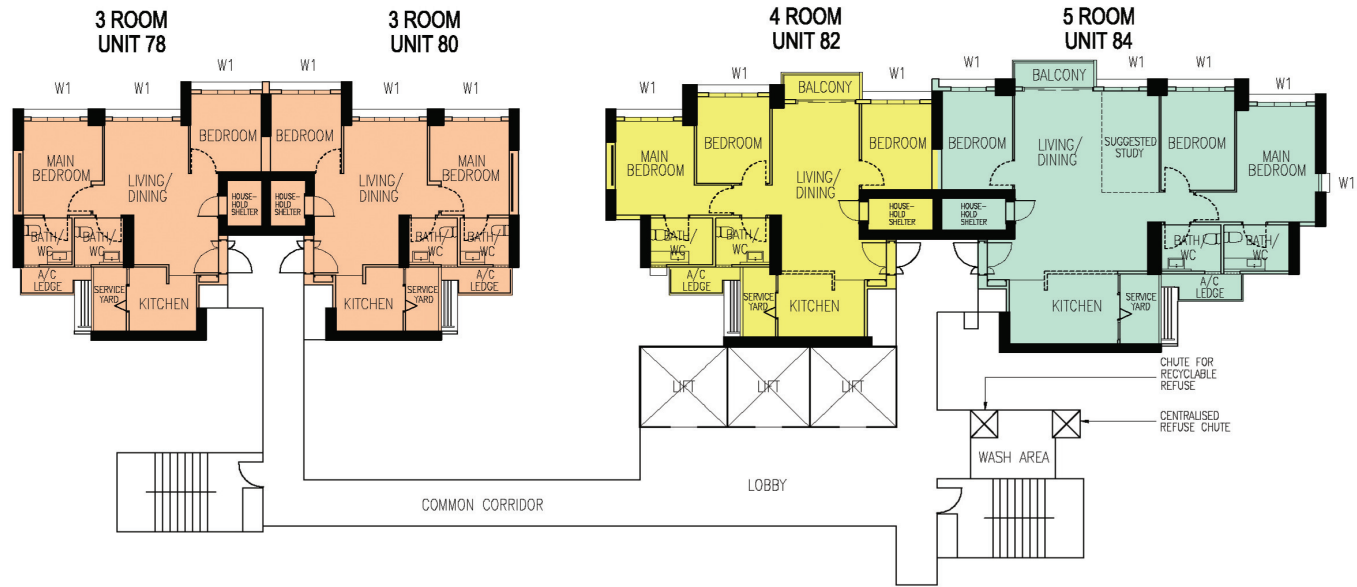
WINDOW LEGEND :

W1 – FULL HEIGHT WINDOW (APPROX. 300mm HIGH PARAPET WALL)

UNLESS OTHERWISE INDICATED, ALL WINDOWS WILL BE STANDARD HEIGHT WINDOWS

The coloured floor plan is not intended to demarcate the boundary of the flat.





LEGEND :

- 3 ROOM
- 4 ROOM
- 5 ROOM

BLOCK 96 (40TH TO 43RD STOREY FLOOR PLAN)

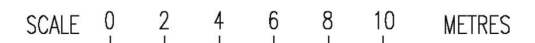
Units at and above 9th storey are higher than the main roof garden level of Block 95A

WINDOW LEGEND :

W1 – FULL HEIGHT WINDOW (APPROX. 300mm HIGH PARAPET WALL)

UNLESS OTHERWISE INDICATED, ALL WINDOWS WILL BE STANDARD HEIGHT WINDOWS

The coloured floor plan is not intended to demarcate the boundary of the flat.



GENERAL SPECIFICATIONS FOR DAWSON SITE C FOR 2-ROOM, 3-ROOM, 4-ROOM & 5-ROOM

Foundation

Piled foundations.

Structure

Reinforced concrete structural framework with reinforced concrete slabs.

Roof

Reinforced concrete roof slab with precast concrete secondary roofing.

Walls

All external and internal walls are constructed with reinforced concrete/ solid blocks/ bricks with cement plastering/ precast panels/ precast lightweight concrete partitions/ drywall partition system.

Windows

Aluminium framed windows with tinted glass.

Doors

Entrance	:	decorative solid timber door and metal gate
Bedroom	:	decorative solid timber door (Type D10) (optional)
	:	laminated semi-solid timber sliding partition for 2-Room
Bathroom/ WC	:	laminated semi-solid timber door (Type D10a) (optional)
	:	acrylic panel folding door for 2-Room
Household Shelter	:	metal door
Service Yard	:	aluminium framed door with glass
Balcony (where applicable)	:	aluminium framed door with glass

Finishes

Ceilings	:	skim coated or plastered and painted
Kitchen/ Bathroom/ WC Walls	:	ceramic tiles
Other Walls	:	skim coated or plastered and painted
Living/ Dining Floor	:	polished porcelain tiles with timber skirting (optional)
Bedroom Floor	:	timber strip flooring with timber skirting (optional)
Kitchen Floor	:	glazed porcelain tiles
Bathroom/ WC Floor	:	ceramic tiles
Service Yard Floor	:	glazed porcelain tiles with tile skirting
Household Shelter Floor	:	glazed porcelain tiles
Balcony Floor (where applicable)	:	structured textured tiles with tile skirting (optional)

Fittings

Quality Locksets
Water Closet Suite
Clothes Drying Rack
Vanity top wash basin at attached Bathroom/ WC, wash basin for other Bathroom/ WC (optional)
Bath/ Shower mixer with shower set, tap mixer (optional)

Services

Gas services and concealed water supply pipes
Exposed sanitary stacks (which can be located at Service Yard and/ or Air-con ledge)
Concealed electrical wiring to lighting and power points (including water heater and air-conditioning points)
Television points
Data points

Important Notes

- 1) The Household Shelter is designed for use as civil defence shelter. The walls, ceiling, floor and door of the Household Shelter shall not be hacked, drilled, altered or removed.
- 2) Air-con panel in the main bedroom will not be provided.
- 3) Any unused or unoccupied open spaces in front of or nearby/ adjacent to the flat units are not available for purchase and the HDB will not entertain any request from the flat owners to purchase and/ or enclose the unused or unoccupied open spaces.
- 4) The details of services in a flat, e.g. gas pipes, water pipes, sanitary stacks, electrical wiring, television points, data points, etc. are not indicated on the plans.
- 5) When selecting the flat, buyers may opt for items listed above as optional under the Optional Component Scheme. The cost of the optional items opted for will be added to the purchase price of the flat.

You are advised to visit HDB's website at www.hdb.gov.sg for information on renovation rules.

Disclaimer

1. HDB owns the copyright in all information, maps, and plans of this brochure.
2. The content provided in this brochure is not intended to form part of any offer or contract for the sale of flats. They are provided for your general information only, and are not statements or representations of fact.
3. Visual representations, such as pictures, art renderings, depictions, illustrations, photographs, drawings, as well as other graphic representations and references, are only artistic impressions. They are provided for your general information only, and are not representations of fact.
4. The information on this project, including but not limited to the dimensions, areas, plans, colour schemes, descriptions, and specifications, are subject to change or review without notice at our sole discretion or if required by the relevant authorities.
5. We may at any time, without any notice and at our sole discretion, change any aspect of this project, including but not limited to the omission, amalgamation, increase, or reduction of amenities and facilities, colour schemes, design features, and specifications.
6. We will not entertain any request for alteration of the layout or specifications of a flat to suit individual needs.
7. While reasonable care has been taken in providing the information in this brochure, we do not warrant its accuracy. We shall not be responsible in any way for any damage or loss suffered by any person whether directly or indirectly as a result of reliance on the said information or as a result of any error or omission therein.
8. The floor areas shown are scaled strata areas and subject to final survey.
9. The surrounding land use, proposed facilities and their locations as shown in the maps and plans are indicative only and subject to change. They may include ancillary uses allowed under the Urban Redevelopment Authority's prevailing Development Control guidelines.
10. We reserve the right to use or allow the use of
 - the void deck in any Apartment block,
 - Car park;
 - Common property (such as precinct pavilion); or
 - Standalone community building,for :
 - Future amenities/ facilities (such as child care centres, elderly-related facilities, education centres, residents' committee centres, and day activity centres);
 - Commercial facilities (such as shops and eating houses);
 - Mechanical and electrical rooms; and
 - Such other facilities as we deem fit.
11. This brochure does not and is not intended to provide full and complete information of the guidelines or requirements of the relevant authorities. You are advised to approach the relevant authorities directly for full information and details of these guidelines and requirements.



Copyright © Housing & Development Board
All rights reserved. Printed in January 2016